

John Rodriguez

— YACHTS —

WWW.JRYACHTS.COM

John Rodriguez Yachts, Hillcrest, Rockbourne Rd, Fordingbridge, Hants, SP6 1QF, UK

Tel: +44 (0)7505 485 950 | john@jryachts.com



Alubat Ovni 435 - SOLD

£179,950 GBP tax paid/included

United Kingdom

Recent standing rigging and many updates

Manufacturer/Model	Alubat Ovni 435 - SOLD
Name	Tintin
Year	2006
Category	Sail
New or used	Used
Status	Sold
Price	£179,950 GBP
Tax/VAT status	Paid / included
Price comment	Recent standing rigging and many updates
Lying	Swanwick, Southampton, United Kingdom
Reference	O435PF

Specifications

Length overall	13.37 m
Length waterline	10.59 m
Beam	4.22 m
Draft	2.54 m
Displacement	10,300 kg
Hull	Aluminium
Keel	Lifting keel

Description

Sorry, this yacht is now SOLD

Similar yachts - ESPECIALLY MORE OVNI'S - always required for active brokerage clients.

Please visit the John Rodriguez Yachts [Sell Your Yacht Section](#) if you would like us to broker your yacht.

More [Yachts for sale here](#)

A stunning 2006 Ovni 435 for sale.

Maintained with no expense spared by her owners, this yacht looks to be a very well equipped vessel that is in very fine order.

Much loved, she has been upgraded with new standing rigging in 2015, new genoa in 2014 and a professional paint treatment in 2013. Her owners are only selling in order to move up to a 55ft aluminium yacht.

A capable go anywhere yacht, she is cutter rigged and well set up for easy cruising with an electric cockpit winch, Max Power VIP vertical retractable bow thruster, lifting keel and very comfortable accommodation.

Full details are in the specification section but highlights include:

New standing rigging (2015)
Eberspacher warm air heating to all cabins and heads
Max Power VIP vertical retractable bow thruster
Maxprop three bladed folding propeller
55HP Volvo D2.55 Engine
Hydraulic rudder and center board lifting system
Battery charger and load distributor
2 alternators on engine
LE300 wind generator new 2012
2* 50 W solar panels
Arch over stern for, radar, solar panels, wind genie, aerials and davit for tender
Simrad plotters, radar and autopilot
Instrument read outs above companion way
Cutter Rig
Profurl genoa furler
North Sails Full Batten Main (number 435!) - 7 oz Soft NorLam – Radial- 3 reefs
(Single line for reefs 2nd& 3rd)
New Owen Sails Genoa 2014 (+ original North Sails Furling Genoa 6 oz Soft NorLam – Radial)
North Sails Stay Sail- 7 oz Soft NorLam
North Sails Gennaker - Norlon 150 – Radial with Tintin and Snowy Logo in green (Looks great)
Snuffer for gennaker
6 winches in cockpit including 1 electric Lewmar 40 AEST on coach roof to starboard
Lofrans project 1500 windlass
25kg Rocna Anchor
Bimini

Lying Swanwick, Southampton

Viewing is highly recommended

Available to view strictly by appointment

Office Hours Mon- Fri 0900 – 18.00

Saturday by prior appointment

For more information or to arrange a viewing please contact John Rodriguez Yachts

Please note all our yachts are privately owned and actively for sale.
Due to the varying geographic marina locations of our yachts and travel time and distances involved, please only make travel arrangements to view if you are actively considering purchase.

Tel: +44 (0)7505 485 950
Email: john@jryachts.com

Main Specification

GENERAL SPECIFICATION:

Year 2006
LOA: 13.37m Hull Length: 12.90 m
LWL: 10.59m Beam: 4.22m
Draft (lifting keel): 0.74m to 2.54m
Light Displacement: 10,300 kg
Ballast Weight 3,600kg (sealed in lead)
Water Capacity: 610 Litres
Fuel Capacity: 300 Litres
CE Category: A

2 double aft cabins (one with additional child's bunk)
1 forward cabin
2 heads, both with showers and holding tanks

ADDITIONAL DETAILS:

Welded items
1 welded cleat in anchor locker
2 welded cleats on arch
1 welded cleat on transom
4 dorades on fore deck (2 under granny bars and 2 protected by customised protectors to stop main sheet tangling)
2 welded hand rails on deck
2 welded hand rails on stern
Welded aluminium bumper rail round hull just above port holes (painted)
Welded wind/spray deflector on deck in front of canopy
Welded pipe skin fittings to all services below water line
Stern anchor roller on port side
600 mm radar mast on arch
Opening aft portholes on coach roof from stern cabins to cockpit.
Fixed cockpit table with storage for glasses, drinks, fishing tackle etc
Enclosed locker for life raft on stern
Welded bosuns locker on companion way
Welded safe
Base plate for retrofit of generator and removable battery box under forward berth
Removable bow sprit

MECHANICAL & ELECTRICAL:

5 service batteries
1 Engine battery also in stern between cabins (new 2014)
2 batteries for bow thruster in forward cabin (new 2014)
2 alternators on engine
LE300 wind generator new 2012 fitted to arch
6 winches in cockpit including 1 electric Lewmar 40 AEST on coach roof to starboard
2* 50 W solar panels on independent support on arch
Maxprop three bladed folding propeller
Rope cutter
Lopo light – tricolour + white (new 2012)
Light at underside of Arch upgraded to make properly water proof 2014
Lofrans project 1500 windlass
Flexible light over chart table
6 interior red night lights; 1 in each cabin, plus over chart table and galley.
2*240 V outlet in main cabin
1* 240 V outlet in fore cabin
Xantrex Link 20 battery monitor
12V outlet at steering pedestal

12 V outlet at instrument console above companionway
12 V outlets in all 4 cabins
Eberspacher warm air heating to all cabins and heads
Max Power VIP vertical retractable bow thruster

DECK & SAILS:

North Sails Full Batten Main (number 435!)- 7 oz Soft NorLam – Radial- 3 reefs
(Single line for reefs 2nd & 3rd)
New Owen Sails Genoa 2014 (+ original North Sails Furling Genoa 6 oz Soft NorLam – Radial)
North Sails Stay Sail- 7 oz Soft NorLam
Stay sail deck bag
North Sails Gennaker - Norlon 150 – Radial with Tintin and Snowy Logo in green. (Looks great)
Snuffer for gennaker
Lazy bag and lazy jacks for mainsail
Rod Kicker, with new blocks and tackle added 2013
Harken mast track with batten and intermediate cars
Spinnaker pole up haul led to clutch on mast
Cockpit table + combined wheel and pedestal cover
Boarding ladder on starboard side of sugar scoop transom
Large sprayhood with zip out centre and easy to grab hand rail
Bimini
Folding mast steps
4 wichard size 8 harness points in cockpit
10 wichard pad eyes on deck
Walder boom brake 403H
Towed Lewmar genoa cars
Curved helmsman seat and closed pushpit on starboard side
Gate in pushpit on port side to allow access to stern sugar spoon
Spi pole
ST16 reefing winch under boom
Ball race blocks Harken ESP 6056 at mast foot (8)
Aluminium Rigging covers

INTERIOR:

Ocean air roller blinds to all opening deck hatches
Drinking water filter unit at galley sink
Insulation + Armacell on all frames
Stainless Steel Hand rails on teak at companion way
Childs berth in port cabin
2 Lavac Zenith sea toilets
Deep double sink in galley
Book shelf and divider in chart area + book shelf in forward cabin
Salt/Fresh water foot pumps n both heads and at galley sink.
ENO Gascogne twin burner oven
Removable shelves plus hanging rails in all hanging lockers
Wooden grab rails added to coach roof in main salon

NAVIGATION EQUIPMENT & ELECTRONICS:

Insulated Back Stay
Radar reflector – Echomax EM230
Simrad CX44 Radar/plotter/Fishfinder 10" Colour screen (at chart table) with antenna DX45 (Radome on arch) and GPS
(GPS antenna on arch)
DS34CX Dual Station Sn View Colour 7" screen at pedestal
Simrad AP25 Autopilot with hydraulic linear drive. Control unit at pedestal.
2 multi display at companionway for log, speed, depth
Wind display at companionway
Combi screen at companionway
Multi display at chart table
Simrad RS87 VHF/DSC at chart table. Can plug hand set into pedestal in cockpit
Navtex NAV6 Dual plus repeater NMEA at chart table
Stereo Radio CD player in salon

SAFETY EQUIPMENT:

Properly adjusted and sized emergency tiller
8 man Ocean Safety life raft on starboard pushpit (requires service)
EPIRB (serviced and battery replaced 2013)

Dan buoy with light (upgraded 2013)
Horse shoe + Light (new 2013)
Oscar Man overboard recovery sling (new 2013)

GENERAL:

25kg Rocna Anchor, with bow rollers adjusted so it fits.
20 Kg Delta Anchor (spare main anchor and used as kedge)
80 M galvanised 10mm chain
Small delta anchor for use when drying out (helps keep position)
Numerous fenders
Numerous lines
Boat hooks, buckets and deck brushes
Lewmar One Touch Winch handles (long and short)

OWNERS COMMENTS:

We bought Tintin in 2009 in the South East of England. She was well specified and well equipped; just what we wanted. At the time we were both working, so over long weekends and holidays we sailed her round the UK to the west coast of Scotland. Since then we chartered her out for a short time whilst we were working (about 3 months in total), but for the vast majority of the time we have sailed her all round Scotland, and over to Norway, or she has been berthed up. Thus she has been comparatively lightly used. The lifting keel has got us into some amazing places.

In 2013 she was given an extensive external refit, with all paint taken off and redone in specialised paint shop, plus various other jobs and improvements. Over the years she has been regularly and well maintained, and is in excellent order. Tintin is a great, sea worthy and reliable boat that the new owners can take anywhere and will love.

Lying Swanwick, Southampton

Available to view strictly by appointment

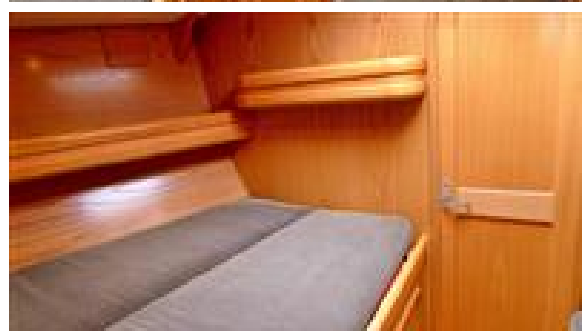
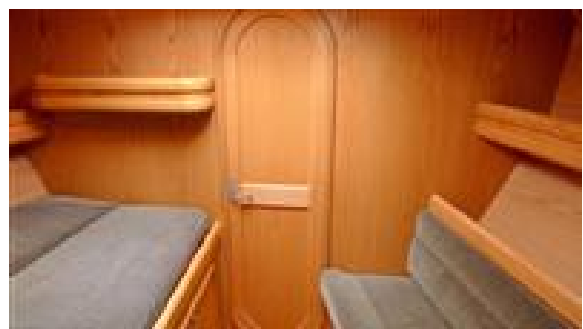
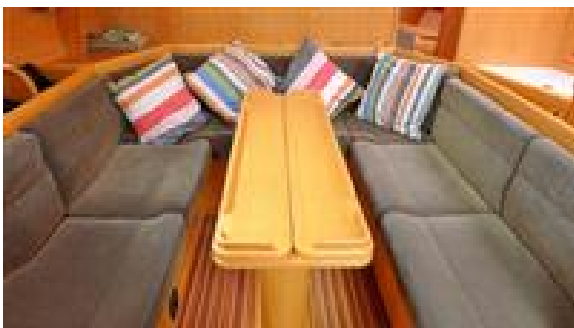
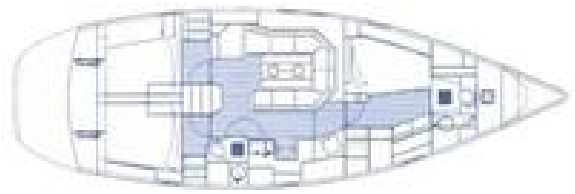
Office Hours Mon- Fri 0900 – 18.00

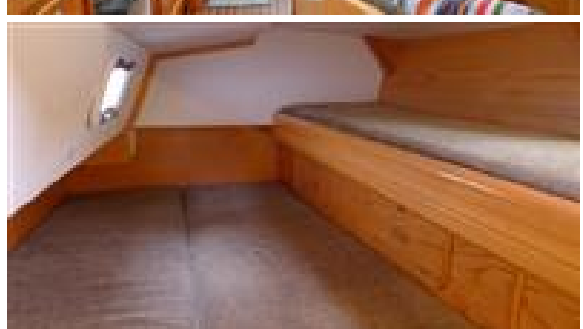
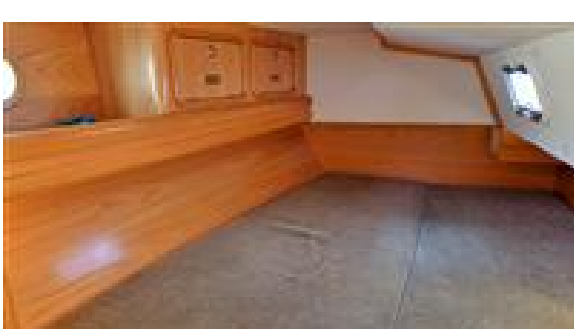
Saturday by prior appointment

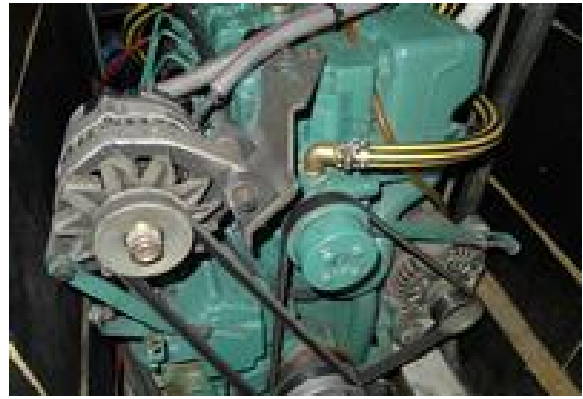
For more information or to arrange a viewing please contact John Rodriguez Yachts

Please note all our yachts are privately owned and actively for sale.
Due to the varying geographic marina locations of our yachts and travel time and distances involved, please only make travel arrangements to view if you are actively considering purchase.

Tel: +44 (0)7505 485 950
Email: john@jryachts.com











John Rodriguez Yachts provides professional ABYA yacht conveyancing & legal transfer of vessel title. The details of all vessels are offered in good faith but the correctness and accuracy of these particulars is not guaranteed and they do not constitute a part of any contract. We cannot guarantee nor warrant any vendor/third party supplied paperwork or the condition of the vessel. A buyer is strongly advised to instruct his agents, or marine surveyors, to investigate such details as the buyer desires validated. Although not mandatory in the UK we would always suggest appropriate training be undertaken before using a vessel. All vessels are offered subject to prior sale, price change, or withdrawal without notice. John Rodriguez Yachts is a trading name of John Rodriguez Yachts LLP Reg. No. OC416718 (England and Wales). Registered office C/O Connect Accounting, 15 Western Parade, Barnet, Herts, England, EN5 1AH. VAT No: 180730322. FCA FRN Number: 676493.