

John Rodriguez

— YACHTS —

WWW.JRYACHTS.COM

John Rodriguez Yachts, Hillcrest, Rockbourne Rd, Fordingbridge, Hants, SP6 1QF, UK

Tel: +44 (0)7505 485 950 | john@jryachts.com



Hylas 54

£445,000 GBP tax not paid/excluded

United Kingdom

Very lightly used yacht

Manufacturer/Model	Hylas 54
Name	Duet of Cowes
Designer	German Frers
Year	2005
Category	Sail
New or used	Used
Status	Available
Price	£445,000 GBP
Tax/VAT status	Not paid / excluded
Price comment	Very lightly used yacht
Lying	Chichester, United Kingdom
Reference	AGHY54

Specifications

Length overall	16.50 m
Length waterline	14.02 m
Draft	2.15 m
Displacement	12,860 kg

Description

Hylas 54 for sale. Exclusive listing in association with Grabau international.

Winner of the prestigious Cruising World Magazine 'Boat of the Year', the German Frers designed Hylas 54 has proven herself as a hugely successful and desirable blue water cruising yacht both in the US and in Europe.

This particular example was ordered to a very high custom specification for the European Hylas importer and has been very lightly used since then with low hours on all her systems and the added benefit of a recently fitted comprehensive B&G/Simrad instrument package. With her push-button rig, electric winches, bowthruster, generator, watermaker, air-con and satellite phone, there is very little to add to make DUET OF COWES the perfect world-girdler or simply an extremely comfortable cruising yacht/ liveaboard.

Presently available exclusive of VAT but fully CE-marked (an important consideration over and above her US-based counterparts), DUET OF COWES should appeal to buyers from all markets. Please call for more details.

Lying Cowes
CONSTRUCTION

RCD Status:

- CE Certification Directive 94/25/CE (Category "A" Ocean)

Hull Construction:

- The hull is hand laid up using TWARON; a carbon aramid (Kevlar) fibre with alternating FRP (fibre reinforced plastic) glass lay up.
- Additional layers of TWARON are used in the bow section for increased impact resistance.
- A solid laminate (ie. no core) is used for maximum strength and longevity.
- Modern vinylester resins and isophthalic gelcoats are used for increased resistance to the effects of osmosis.
- The gelcoat finish is white with blue style lines.
- Below the waterline, the hull is yet further protected from the effects of osmosis by a two barrier coats of epoxy.
- Coppercoat applied to underwater sections
- The hull sides feature a teak rubbing strake with stainless steel capping. This rubbing strake runs the length of the hull sides.
- The bow area is further protected by a stainless steel strike plate in the general anchor area. A protective stainless steel plate can also be found at the transom.
- Internally, a watertight collision bulkhead is found ahead of the forward cabin with independent overboard drainage.
- Aft are watertight stern sections protecting the owner's cabin from water ingress to the aft lazarettes and stern lockers.

Deck & Superstructure Construction:

- Balsa-cored GRP deck & with solid GRP laminate used beneath deck fittings and in high-stress areas.
- The deck and forward coachroof are overlaid with hand-picked teak planking.
- Areas not covered in teak are finished in a high quality grey non-slip GRP finish.
- The cockpit seating and bathing platform are also teak laid with teak grating above the cockpit sole
- Raised solid teak bulwark is fitted along the lengths of the deck with stainless steel fairleads in way of mooring cleats.
- The superstructure and forward coachroof also feature stainless steel or teak grab rails
- Ventilation to below decks is via a number of opening alloy deckhead hatches, stainless steel cowl vents and stainless steel opening side ports.

Keel & Rudder:

- The keel is a fin section with a slight bulb to the base.
- The keel material is solid lead, attached to the GRP bilge with 35mm acid resistant stainless steel bolt with transverse mounted 8mm backing plates.
- The rudder is a semi-skegged GRP blade for optimal performance, strength and protection.
- The draft of the rudder is less than the keel, to ensure full protection in case of accidental grounding.

MACHINERY

Engine & gearbox:

- Yanmar 4JH-series 125hp 4 cylinder turbocharged diesel engine with cockpit controls and alarm system
- Approximately 557hrs run as of September 2015
- Freshwater cooling system via raw water intake and heat exchanger

- Yanmar reduction gearbox
- Morse single lever control system to protect against high RPM gear shifting
- Dual Racal fuel filtration system allowing independent filter and bypass system
- Walborough in-line fuel system allowing engine bypass for filtration and eliminating the need for future engine bleeding in the case of a dry fuel tank
- Oil change pump built in as standard
- Engine room sound insulation, fire retardant

Propulsion & Steering:

- Brunton Varifold 4-bladed folding propeller
- Rope cutter
- 1 1/2" stainless steel propeller shaft
- Flexible shaft coupling
- Shaft brake
- Non-drip shaft seal
- Whitlock Lewmar pedestal with offset pedestal for instrument mounting and binnacle compass
- Whitlock large diameter hide-covered stainless steel helm wheel with cable linkage to quadrant
- 24v Sleipner Sidepower bowthruster with control at helm pedestal
- Emergency steering gear

ELECTRICAL SYSTEMS

Voltage systems:

- 12 & 24vDC domestic systems with 220vAC via shorepower or inverters

Battery Banks:

- 1x 12vDC 125Ah AGM engine start battery
- 5x 12vDC 200Ah AGM service batteries joined in parallel and series to supply 500Ah @ 24vDC
- 2x 12vDC 200Ah AGM batteries for bowthruster, genoa furling and anchor windlass
- Victron BMV-501 battery monitoring system
- All batteries are isolated with a built in reverse isolation switch
- All batteries self contained and strapped in place

Charging:

- 3x Victron Multi Pheonix 24vDC chargers with 3kw inverters linked in parallel
- 1x Protech 12vDC 50Amp automatic battery charger for engine/generator start
- Victron Pheonix Multi-Control for primary battery charger/inverters

Alternators:

- Yanmar engine-mounted alternator (12v)
- Balmar high output 24vDC alternator
- Balmar MaxCharge voltage regulator for high output alternator

Generator:

- Fischer Panda DC variable speed 8kva generator
- 353 hrs run as of September 2015

Other Electrical:

- Marinco 32Amp 50Hz 230vAC shore power system with ring-main and 220vAC sockets throughout yacht.
- 220vAC ring main with sockets throughout
- Main AC/DC control panel with V, A & Hz meters
- Wiring "tinned" to reduce corrosion
- Two 3? copper strips running bow to stern both port and starboard for grounding
- Galvanic isolator with status monitor

PLUMBING & GAS SYSTEMS

Fresh Water:

- Two independent DC freshwater pump systems with visual indication lights at AC/DC panel
- Manual freshwater pump, foot activated for freshwater accessed in the galley
- Hot water supply via engine calorifier and 220vAC 1,500w immersion heater element in 10 US gallon hot water tank powered by shorepower

Watermaker:

- High Pressure DC watermaker (unused since new and will require recommissioning/overhaul)

Bilge Pumps:

- Two independent DC bilge pump systems
- Total of 2000 gallons/hour with Bilge Bug conductive switches
- Third DC bilge pump system for lazarette

- Manual bilge pump in cockpit

Other Plumbing:

- All through hull fittings are solid bronze and all are bonded
- Saltwater deck wash
- Pressurised cockpit shower

TANKAGE

Fuel:

- 328 (US) gallons (1,246 litres) of total fuel tankage in four independent stainless steel tanks
- All tanks have easy access for inspection with dipstick, threaded inspection cap and larger inspection port
- Tank Tender system for monitoring tank levels
- Fuel manifold system with electric fuel transfer pump

Fresh Water:

- 227 (US) gallons (895 litres) of total water tankage four independent stainless steel tanks
- All tanks have easy access for inspection with dipstick, threaded inspection cap and larger inspection port
- Tank Tender system for monitoring tank levels

Holding Tanks:

- 37 (US) gallon (140 litres) independent holding tank for forward heads
- 27 (US) gallon (102 litres) independent holding tank for aft heads
- Dual Y valve system for deck pump out, and direct pump out overboard with independent hand pump
- Tankwatch 4 level monitoring systems at both heads

NAVIGATION & COMMUNICATION EQUIPMENT

At Helm:

- 2x B&G Triton multi-displays – 2014
- B&G Triton autopilot control attached to Simrad AC-42 autopilot computer – 2014
- Ritchie Powerdamp binnacle compass
- Scanstrut pod mounting system

At Companionway:

- B&G Z12 12" colour radar/chart plotter display with Scanstrut pod – 2014
- Simrad Navico NAIS-300 Class B AIS transceiver connected to plotter displays – 2014
- Simrad closed-array radar scanner on mast
- 3x B&G Triton multi-displays -2014

At Chart Table:

- B&G Z12 12" colour radar/chart plotter display – 2014
- 2x B&G Triton multi-displays – 2014
- B&G Triton autopilot control – 2014
- Furuno NX300 navtex display
- Clock & barometer (mounted to main bulkhead)

Communications Equipment:

- Simrad RS87 VHF with DSC and secondary station mount at helm
- Simrad VHF speaker with secondary speaker at companionway
- Icom IC-M802 SSB with external speaker
- Pactor modem for SSB
- Simrad Nera 33 Inmarsat Fleet satellite phone with MS33 Satcom control system

DOMESTIC EQUIPMENT

Galley:

- Force 10 three burner stove with oven and grill
- Sharp 800w Dual-Grill microwave
- Large twin FrigoBoat DC Freezer/Refrigeration system with keel collars, thermostatic controls and temperature gauges

Heads:

- 2x Vacuflush DC electric freshwater heads
- Zanussi FC1200w washing machine in locker outboard of aft shower cubicle
- Hot & cold pressurised water supplies with dedicated shower cubicles

Air Conditioning & Ventilation:

- Cruisair 220vAC reverse-cycle air-conditioning system with 16,000BTU unit in saloon, 11,000BTU in aft cabin and 11,000BTU in forward cabin (can run from DC generator via Victron inverters)
- DC fans throughout interior

Lighting:

- Internal lighting: Halogen & LED DC

Entertainment:

- Phillips 24" LCD TV on motorised bracket in saloon
- Apple TV system
- Glomex amplified TV aerial
- Simrad SonicHub Bluetooth media streaming system with Ipod dock at chart table and music/phone control interfaced to chartplotters in cockpit and at chart table – 2014
- Fusion cockpit speakers

ACCOMMODATION

(Please note DUET OF COWES features an outboard facing navigation station with walkthrough to aft heads unlike the layout shown)

Summary of Accommodation:

- Two double cabins with ensuite heads plus further converting double and sea-berths in saloon

Accommodation Finish:

- Customised teak interior
- Solid teak and holly soles laid on subflooring with epoxy urethane coating and seven layers of varnish
- Solid teak doors and trim
- Finely finished cabinetry with a choice of solid or louvered finish
- Solid teak handrails throughout the interior for easy movement offshore
- Abundant overhead hatches and ports for excellent ventilation
- Epoxy sealed endgrains and subflooring
- All cabin sole pieces are positive locking for offshore passage making
- All cabinets are finished throughout including complete interiors
- All overhead headliner are easily removed
- Santos (similar to Alcantara) upholstery throughout – pale green in saloon and blue in accommodation cabins
- Textured off-white headlinings
- Oceanair blinds throughout including deck saloon
- Split bunks in forward and aft cabins with lee cloths where necessary

Description of Accommodation from Forward:

Forward Cabin

- Full double berth 6' 9" in length
- Three rows of two drawers underneath berth
- Starboard side allows an option of three full length hanging lockers, settee or desk area
- Cabinets above the berth for added storage

Forward Heads:

- Laminated counters with Moen faucet
- Three large storage lockers in head
- Heads with holding tank
- Dedicated shower cubicle
- Access from forward cabin or main corridor

Midships Cabin:

- Aft of the forward cabin to port, this cabin offers the versatility to be private double stateroom, an upper and lower berth for crew's quarters

Main Saloon:

- Burr wood dinette.
- Full length starboard settee extends a further 9' for wide sea berth
- All tankage in main saloon is located below the sole allowing extensive storage under all seating areas and behind the dinette and settee
- Double walk through passageway offering optimal ventilation and movement throughout the interior
- Slide out seat with storage for added seating which slides in while underway
- Custom TV cabinet area
- Built in cocktail cabinet
- Maximum headroom just under 7'

Galley:

- Galley is over 7' in length to aft cabin offering total safety with roam to brace on either tack while offshore
- Ample cabinets, storage lockers and drawers including full length pantry for cutlery, cookware and food storage
- Slide out trash container with positive locking door
- Force 10 three burner stove with Xintex propane monitor and two sensors

- Large Frigo-0-Boat Freezer/Refrigeration system with thermostatic controls and temperature gauges
- Freezer/Refrigeration boxes have electric pumps for keeping drained, and are both top and front loading
- Counter top recesses over stove allowing for stainless steel backsplash and increased counter space when in place
- Manual foot pump for fresh water
- Wahlee stone counters

Navigation Station:

- Customised nav station with adjustable swivel chair
- Split instrument panel for instant access to wiring harness and connections
- Fast pin access to complete wiring harness and breakers
- All instruments and systems well labelled inside and out and traced numerically

Aft Cabin

- Queen size aft berth set on centreline with split mattress and accompanying starboard side settee
- Port and starboard side hanging lockers with optional removable shelves
- Full length deep hanging locker on centreline
- Portside vanity unit with fold up mirror and drawer with three separate cupboards
- Cupboards or drawers available under owner's berth

Aft Head

- Laminated counters with Moen faucet
- Storage lockers in head
- Heads with holding tank
- Dedicated shower cubicle
- Large dedicated linen closet used for washer/dryer location

DECK EQUIPMENT

Rig:

- Selden white-painted aluminium mast keel-stepped mast
- Schaefer mast turning blocks
- Selden electric inmast furling system with buttons in cockpit
- White painted Selden boom
- White painted Selden rod vang with control line led aft to cockpit
- Triple in-line spreaders
- Discontinuous stainless steel rigging with Sta-Lok rigging screws – 2005
- Forward and aft lowers for rig stability
- Insulated split backstay
- Lewmar adjustable mainsheet track
- Bamar MEJ 1-02 electric genoa furler
- Harken stand-up genoa sheet blocks
- Inner forestay deck and mast fittings for future fitment of staysail foil and furler
- Lewmar genoa tracks with cars for genoa and staysail
- Further jib tracks on coachroof
- White carbon fibre spinnaker pole – mast-mounted
- Removable stainless steel bowsprit for furling cruising chute
- Spinlock clutches
- Checkstays
- Gybe preventer
- Spinnaker halyard
- Staysail halyard

Winches:

- 2x Antal W66 2-speed electric self-tailing primary winches
- 2x Antal W52 2-speed manual self-tailing secondary winches
- 1x Antal W48 2-speed manual self-tailing outhaul and vang winch at companionway
- 1x Antal W48 2-speed electric self-tailing mainsheet winch aft of cockpit
- 2x Lewmar 54ST manual 2-speed self-tailing mast-mounted halyard winches

Sails:

- Vertically-battened Dacron inmast furling mainsail – 2008
- Furling Dacron genoa – 2008
- Furling Dacron staysail – 2008
- Sanders Sails furling cruising chute – 2006/7

General:

- 32' high stanchions with double lifelines
- Side boarding ladder with port and starboard mounting brackets
- Manship 316 stainless overhead hatches and ports throughout
- Stainless steel handrails on foredeck coachroof and aft coachroof

- Stainless steel companionway handrails
- Solid teak cockpit table with teak drinks holder, varnished
- Solid stainless cowl vents : 4 in total – one pair forward, one pair aft
- Stainless protective stern plate
- Fresh water hot and cold shower on stern steps
- Fold-down stainless steel stern ladder
- Removable chocks for tender (can be mounted on foredeck or across aft deck)
- Stainless steel antennae pole at transom with satellite phone and Navtex aerial
- Stainless steel pushpit cradle for liferaft
- Outboard bracket

Anchoring & Mooring:

- Solid stainless stem head fitting with split bow roller with stowage for two anchors
- Solid stainless steel striker plates for bow protection
- Maxwell Nilsson 3500 3.5kw windlass with chain feed stainless plate for chain protection plus bow controls and remote cockpit windlass control
- Maxwell Autoanchor 500C chain counter and cockpit windlass control
- 32kgs Delta anchor with 90mm of 3/8" galvanised chain
- Saltwater washdown at bow
- Two pairs of stainless steel bow cleats : one pair of 12? midship cleats and one pair of 12? stern cleats
- Fore and aft mooring lines
- Fenders

Covers, Cushions & Canvas:

- CJ Marine canvas sprayhood with stainless steel grabrail
- CJ Marine canvas bimini with side-panels to create full cockpit enclosure
- CJ Marine canvas helm pedestal and wheel cover
- Blue vinyl cockpit cushions

SAFETY EQUIPMENT:

Navigation Lights:

- Running lights, masthead, anchor, tricolour, steaming and foredeck lights (mostly LED)

Life saving:

- Forties ISAF 6-man canister liferaft (service now due)
- 2x Oceansafety horseshoe buoys
- Stainless steel outboard crane with lift capacity for MOB recovery
- Webbing jackstays
- Global Fix 406Mhz EPIRB
- Loud hailer/fog horn system

General note on safety equipment: Any safety equipment such as liferafts, fire extinguishers and flares etc. are usually personal to the current owner(s) and if being left on-board as part of the sale of a used vessel may require routine servicing, replacement, or changing to meet a new owners specific needs.

Fire & gas control:

- Fireboy engine shutdown controls in cockpit and at chart table
- Xintex propane monitor and two sensors
- Fire extinguishers throughout

Lying Cowes

Available to view by appointment

Please note all our listed yachts are privately owned and located in the owner's home port or marina. Due to the varying geographical marina locations of our yachts and the subsequent travel time and distances involved, please only make travel arrangements to view if actively considering purchase.

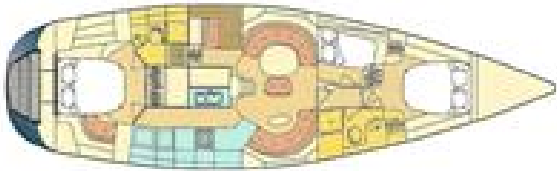
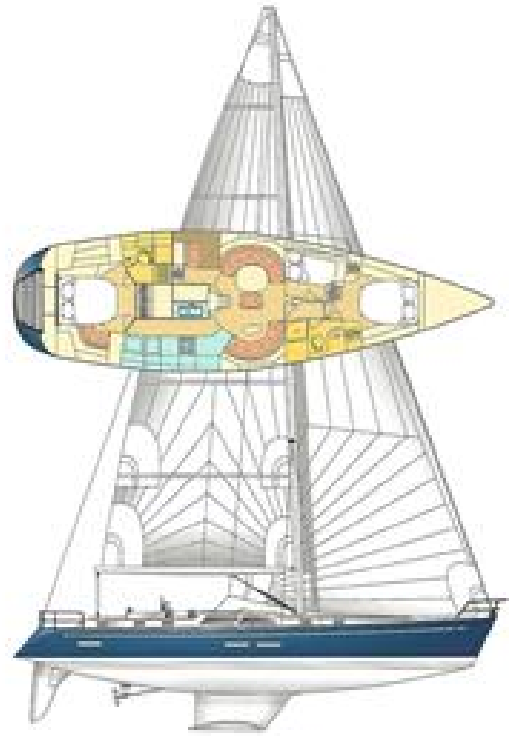
Office Hours Mon- Fri 09.30 – 17.30

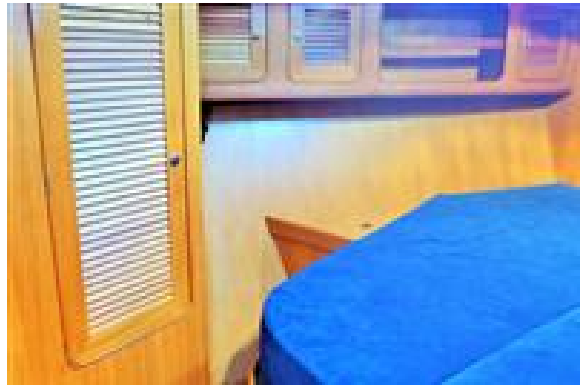
Saturday by prior appointment

For more information or to arrange an appointment please contact John Rodriguez Yachts

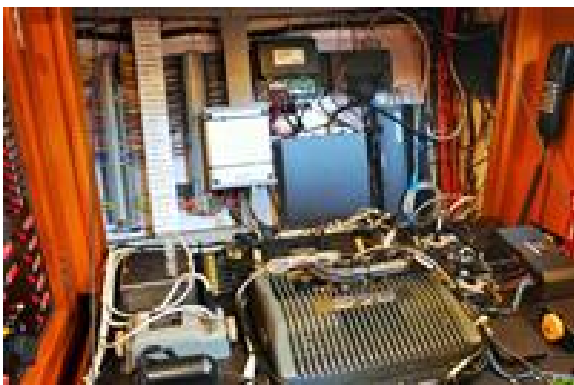
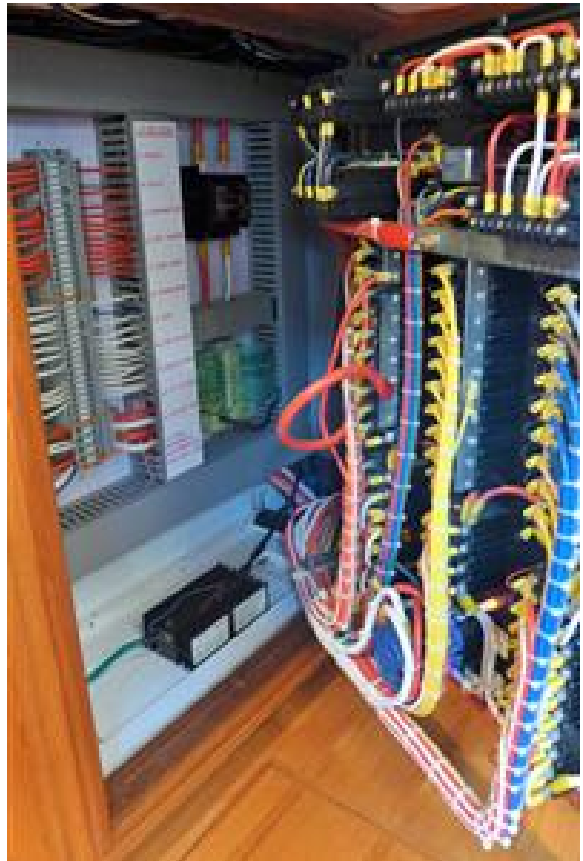
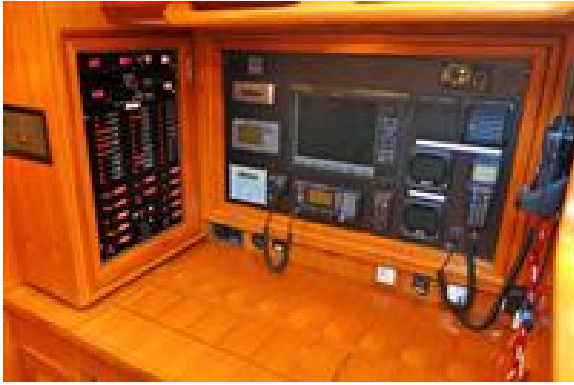
Tel: +44 (0)7505 485 950

email: john@jryachts.com















John Rodriguez Yachts provides professional ABYA yacht conveyancing & legal transfer of vessel title. The details of all vessels are offered in good faith but the correctness and accuracy of these particulars is not guaranteed and they do not constitute a part of any contract. We cannot guarantee nor warrant any vendor/third party supplied paperwork or the condition of the vessel. A buyer is strongly advised to instruct his agents, or marine surveyors, to investigate such details as the buyer desires validated. Although not mandatory in the UK we would always suggest appropriate training be undertaken before using a vessel. All vessels are offered subject to prior sale, price change, or withdrawal without notice. John Rodriguez Yachts is a trading name of John Rodriguez Yachts LLP Reg. No. OC416718 (England and Wales). Registered office C/O Connect Accounting, 15 Western Parade, Barnet, Herts, England, EN5 1AH. VAT No: 180730322. FCA FRN Number: 676493.