

# John Rodriguez

## — YACHTS —

WWW.JRYACHTS.COM

John Rodriguez Yachts, Hillcrest, Rockbourne Rd, Fordingbridge, Hants, SP6 1QF, UK

Tel: +44 (0)7505 485 950 | john@jryachts.com



## Island Packet 485 - SOLD

**£299,950 GBP tax paid/included**

**United Kingdom**

**High specification luxury cruiser**

Manufacturer/Model	Island Packet 485 - SOLD
Name	Island Wanderer
Year	2008
Category	Sail
New or used	Used
Status	Sold
Price	£299,950 GBP
Tax/VAT status	Paid / included
Price comment	High specification luxury cruiser
Lying	Southampton, United Kingdom
Reference	IP485PB

## Specifications

Length overall	15.73 m
Length waterline	13.15 m
Beam	4.67 m
Draft	1.60 m
Displacement	20,025 kg
Hull	GRP
Keel	Long keel

## Description

Island Packet 485 For Sale.

Sorry, unfortunately this yacht is now SOLD

Do you have a similar yacht for sale? If so we are always seeking quality cruising yachts for active buyers, especially in the Solent and surrounding areas. For more details please see the [Sell Your Yacht Section](#)

For our full list of other yachts for sale please see the [Yachts for sale section](#)

The Island Packet 485 is an immensely strong, high quality, cutter rigged center cockpit cruiser. Built to cross oceans in absolute comfort, she is equally at home providing an incredibly spacious and luxurious yacht for local sailing or as a superb platform for long distance liveaboard sailing.

At just over 51ft she provides excellent accommodation and tremendous levels of storage. With her sea kindly motion, electric winches and easy sail handling she is a pleasure to sail short handed or as a couple, with a surprising turn of speed.

Well received by the yachting press the 485 was described by Blue Water Sailing magazine as:

"The boat sails easily and comfortably; those two words encapsulate the boat's greatest virtue. It is forgiving, and will sail within a wide range of trim..... A shorthanded crew, such as the cruising couple that represent the typical IP customer, will achieve high average speeds without too much effort."

And Sail magazine commented:

"The 485 will not bounce around and pound upwind like the lightweights and more often than not will be forgiving and comfortable in all but the worst conditions. I was not expecting grand-prix performance during my test sail off Annapolis, but the 485 was no slouch by any standard."

See the video for a walkthrough of her interior layout.

This particular one owner example was launched in 2009 and was the 2008 Southampton Boat Show preview model, as such she has an impressive very high level specification.

Full details are in the specification section but her highlights include:

- Electric Winches
- Mamba Drive Autopilot
- Bow Thruster
- Reverse Cycle Air Conditioning
- Water Maker
- Generator
- Duogen long shaft wind / water generator
- 130 watt solar panel
- 1600 watt inverter
- AIS
- SSB
- Skipper 150 Fleet Broadband
- Raymarine HybridTouch e125 multifunction chartplotters (x2)( 2016)
- 2010 Asymmetric by Quantum Sails
- Spinex 5.0 furler for Asymmetric
- 2010 140% ACL laminate Genoa by Quantum Sails
- 2014 Carbon Vectran TT Fiberpath laminate mainsail by Ullman Sails
- 2014 Spare Elvstrom Staysail. (Unused)
- Selden extending bowsprit (2015)
- Rocna 40kg Anchor

6 man valise liferaft  
Avon Hypalon Rover Inflatable R310 Airdeck Dinghy  
Mercury 9.9hp 4-stroke outboard (2011)

LYING: Southampton UK

### **Specification**

BOAT NAME: Island Wanderer

MAKE & MODEL: Island Packet 485

HULL MATERIAL: GRP

YEAR: 2008 (Launch 2009)

LENGTH OVER ALL: 15.73m

LENGTH OVER WATERLINE: 13.15m

BEAM: 4.67m

DRAFT: 1.6m

KEEL TYPE: Long

DISPLACEMENT: 20025 Kg

FUEL TANKAGE: 300 Gal

WATER TANKAGE: 300 Gal

ENGINE MODEL: Yanmar 4JH4-HTE

ENGINE HP: 110 HP

ENGINE HOURS: 1553

SAIL DRIVE OR SHAFT DRIVE: Shaft

DATE LAST ENGINE SERVICE: 18/03/2016

AGE OF STANDING RIGGING: Original

DATE LAST ANTIFOULED: July 2016

### ACCOMMODATION SUMMARY

NUMBER OF SEPARATE SLEEPING CABINS: 3 plus saloon

DOES SALOON CONVERT TO A DOUBLE OR SINGLE BERTH: Yes

TOTAL NUMBER OF BERTHS: 10

NUMBER OF HEADS: 2

### GALLEY AND GALLEY EQUIPMENT:

Cooker has 3 burner hob, oven and grill.

Microwave.

Fridge.

Freezer.

Refrigerated Drawer.

### SAILS:

Original Elvstrom Dacron mainsail, yankee and staysail.

2014 Spare Elvstrom Staysail. (Unused)

2010 Asymmetric – Maxilite 150, 157m<sup>2</sup> by Quantum Sails

2010 140% ACL laminate Genoa by Quantum Sails

2014 Carbon Vectran TT Fiberpath laminate mainsail by Ullman Sails

#### RIGGING AND SPARS:

Cutter rigged. Charleston Spars (Sparcraft).  
Hoyt boom for staysail.  
Forespar LC 15-27 UTS-UTR Carbon / Carbon extending pole stored on front of mast.  
Extending boom for dinghy lift.  
Selden extending bowsprit 2015  
Spinex 5.0 furler for assymetric, fastens to extending bowsprit well ahead of genoa 2015  
Harken furler for genoa and staysail.  
Mainsail furling in Sparcraft mast.

#### WINCHES AND DECK EQUIPMENT:

Lewmar Ocean 64 ECST electric primary winches for genoa sheets.  
Lewmar Ocean 48 ECST electric winch for mainsheet and dinghy hoist.  
Lewmar 48CST 2-speed manual winch for mainsail outhaul.  
Lewmar 48CST 2-speed manual winches for staysail and genoa furling.  
Lewmar 30CST and 16C manual mast-mounted winches for halyards. (x3)

#### GROUND TACKLE AND WINDLASS:

Rocna 40kg Anchor  
90metres of 13mm galvanised chain with circa 30m of warp.  
Muir Atlantic 2500 windlass with controls on foredeck and at helm.  
Guardian aluminium kedge anchor with chain and warp.

#### BOW THRUSTER/ ROPE CUTTER:

Sleipner SidePower 75 bow thruster.  
Fixed 3-bladed propeller.  
Ambassador Rope Stripper.

#### BATTERIES/ELECTRICS/SHORE POWER:

Lifeline AGM x 10. (6 domestic, 2 bowthruster, 1 engine start, 1 generator start) (Engine start and gen start batteries new in April 2017)  
12 volt dc power.  
Two 16 amp 230v shore power inlets.  
Sterling 1600 watt continuous sinewave inverter (3KW max).  
Charles 100 amp 230 volt battery charger.  
Sterling 60 amp chargers, 90 – 270v ac, 40 – 70Hz (x2)  
Electromaax 160 amp alternator with Balmar charge controller and serpentine drive belt.

#### GENERATOR/WIND GENERATOR/SOLAR PANELS:

Maspower MP8M 8kw generator with Yanmar 3TNV76 engine. (672hrs approx)  
Duogen long shaft wind / water generator.  
130 watt solar panel with Blue Sky MPPT charge controller.

#### ELECTRONICS/INSTRUMENTS/ VHF/AUTOPILOT:

Raymarine HybridTouch e125 multifunction chartplotter (x2). 2016  
Raymarine a65 touchscreen chartplotter at companionway. 2016  
Raymarine I70 (x4). 2016  
Raymarine P70 (x2). 2016  
Raymarine 240E VHF with dual station speakers and handsets.  
Raymarine SPX30 autopilot with Lewmar Mamba autopilot direct drive.  
Raymarine AIS650 AIS transceiver. 2016  
SeaMe Active Radar Reflector.  
Echomax radar reflector.  
Icom M801 SSB with automatic tuner and Pactor Modem.  
Skipper 150 Fleet Broadband.  
ICS Nav6 Navtex with optional data display.  
Meteoman barometer

#### ENTERTAINMENT/TV/CD AND RADIO:

LCD TV / DVD unit

Status TV Antenna and booster.  
Pioneer CD Radio stereo with aux input for Ipad and Bose speakers.

**WATERMAKER:**

Dessalator D60 Cruise watermaker – 60 litres per hour ac power.

**SAFETY EQUIPMENT:**

Wetline 6 man valise liferaft – ISO more than 24 hours, requires service.  
Jackstays x 2  
Epirb  
Horseshoe  
Recovery SlingInflatable Jonboy

General note on safety equipment: Any safety equipment such as life rafts, Epirbs, fire extinguishers and flares etc. are usually personal to the current owner(s) and if being left on-board as part of the sale of a used vessel may require routine servicing, replacement, or changing to meet a new owner's specific needs.

**DINGHY AND OUTBOARD:**

Avon Hypalon Rover Inflatable R310 Airdeck.  
Mercury 9.9hp 4-stroke outboard. 2011

**OTHER EQUIPMENT:**

Mermaid M16 16,500 BTU/h Reverse Cycle Air Conditioning.  
Webasto Thermo 90 ST diesel heater with blown heater outlets in forecabin, bunkroom, forward heads, saloon, rear cabin, and radiator in galley with heated towel rail in rear heads.  
Zanussi washing machine in lazarette.  
Complete cockpit enclosure.  
Cockpit cushions.  
Additional full width bimini frame and canvas.

**OWNERS COMMENTS:**

We have thoroughly enjoyed our "stewardship" of Island Wanderer. She has a very sea kindly motion, the long keel is great for ocean cruising, tracking straight when sailing downwind, very comfortable, and copes fantastically well with whatever the weather throws your way.

Island Wanderer performs well and covers distance easily.

The storage space is fantastic with a huge lazarette, and large storage bins under settees, berths and floor in addition to cupboards etc

LYING: Southampton/Hythe

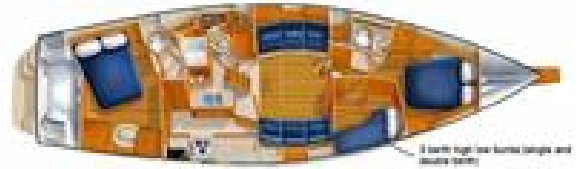
Available to view by appointment

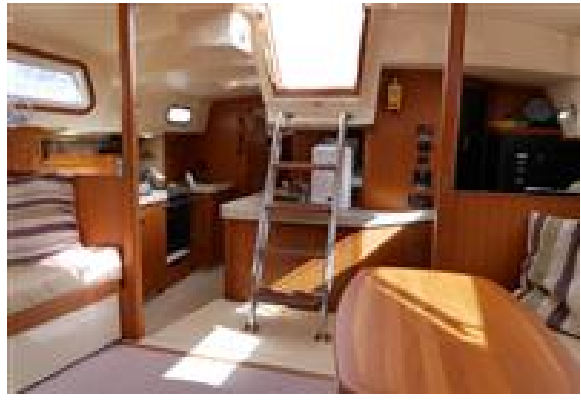
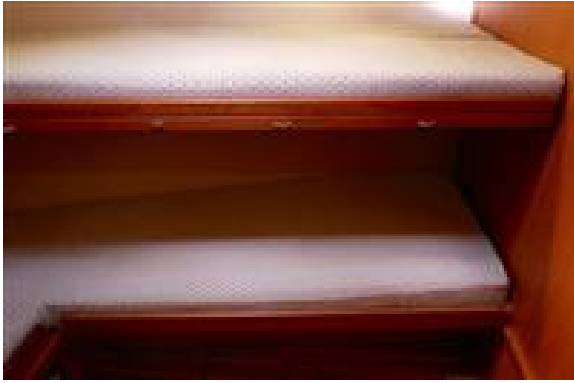
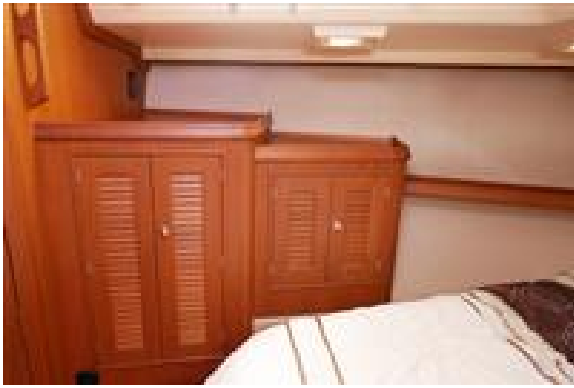
Please note all our listed yachts are privately owned and located in the owner's home port or marina. Due to the varying geographical marina locations of our yachts and the subsequent travel time and distances involved, please only make travel arrangements to view if actively considering purchase.

Office Hours Mon- Fri 09.30 – 17.30  
Saturday by prior appointment

For more information or to arrange an appointment please contact John Rodriguez Yachts

Tel: +44 (0)7505 485 950  
email: john@jryachts.com

















John Rodriguez Yachts provides professional ABYA yacht conveyancing & legal transfer of vessel title. The details of all vessels are offered in good faith but the correctness and accuracy of these particulars is not guaranteed and they do not constitute a part of any contract. We cannot guarantee nor warrant any vendor/third party supplied paperwork or the condition of the vessel. A buyer is strongly advised to instruct his agents, or marine surveyors, to investigate such details as the buyer desires validated. Although not mandatory in the UK we would always suggest appropriate training be undertaken before using a vessel. All vessels are offered subject to prior sale, price change, or withdrawal without notice. John Rodriguez Yachts is a trading name of John Rodriguez Yachts LLP Reg. No. OC416718 (England and Wales). Registered office C/O Connect Accounting, 15 Western Parade, Barnet, Herts, England, EN5 1AH. VAT No: 180730322. FCA FRN Number: 676493.