

John Rodriguez

— YACHTS —

WWW.JRYACHTS.COM

John Rodriguez Yachts, Hillcrest, Rockbourne Rd, Fordingbridge, Hants, SP6 1QF, UK

Tel: +44 (0)7505 485 950 | john@jryachts.com



Tradewind 35 - SOLD

£69,950 GBP tax paid/included

United Kingdom

Very comprehensive re-fit 2016-18

Manufacturer/Model	Tradewind 35 - SOLD
Name	White Rose
Designer	John Rock
Year	1992
Category	Sail
New or used	Used
Status	Sold
Price	£69,950 GBP
Tax/VAT status	Paid / included
Price comment	Very comprehensive re-fit 2016-18
Lying	Lymington, United Kingdom
Reference	TW35WRAS

Specifications

Length overall	10.67 m
Beam	3.25 m
Draft	1.68 m
Displacement	8,819 kg
Hull	GRP
Keel	Full keel

Description

Sorry, unfortunately this yacht is now SOLD

Do you have a similar yacht for sale? If so we are always seeking quality cruising yachts for active buyers. For more details please see the [Sell Your Yacht Section](#)

For our full list of other yachts for sale please see the [Yachts for sale section](#)

Tradewind 35 For Sale - Huge £60,000 re-fit 2016-2018.

The Tradewind 35 is a legendary John Rock design and highly regarded as a fast, comfortable and safe offshore cruiser. Cutter rigged and very much capable of circumnavigating, the Tradewind 35 is also one of the approved designs for the 2018 Golden Globe Race.

Tradewind 35's can still be ordered new today, but expect a price tag starting at 395,000 euro.

So could the 1992 one we have for sale here be the best value on the planet? Quite possibly.

Purchased in 2016 by her current owner for his dream circumnavigation, she has been professionally re-fitted over the last two years at a cost of over £60,000. However unforeseen family circumstances mean the trip has had to be postponed and the yacht is now for sale.

More details are in the specification section but she is fitted with Hydrovane Self-Steering, Solar Panels and a Wind Generator. The accommodation comprises a beautifully fitted out saloon with two sea berths, a comfortable double fwd cabin, a large heads and shower, good sized chart table and nav station, an abundance of stowage and a safe and secure sea-going galley. The interior joinery throughout the boat appears in very good order indeed.

Her re-fit has been extensive and includes:

- New standing rigging with all Sta-Lock terminals
- New stainless steel guardwires
- New Trudesign seacocks and through-hull fittings
- New Treadmaster on the deck
- New Manson Supreme Anchor 20kg
- New Lofrans Tigres 1500 watt electric windlass
- New Raymarine ES75 Chart Plotter
- New Raymarine Evolution Autopilot ACU200 + Type 1 mechanical linear drive
- New Raymarine Quantum Radar and depth sounder i50 + transducer
- New BEP Marine AC and DC Electric switches panel
- New Rutland 914i wind charger + HRDi charge controller + stainless steel pole
- New Victron Energy MPPT solar charge controller
- New NASA battery monitor
- New NASA MeteoMan
- New NASA Easy Navtex + H Vector antenna
- New Seatech AIS instrument with integrated monitor connected to the Raymarine chart plotter
- New navigation led lights
- New Aquasignal tri-colour mast led light
- Three New Trojan batteries 145 Ah each
- New head-linings
- New foam in most cushions
- New insulation both on coach roof and hull above the waterline
- Anti osmosis treatment with International Gelshield 200 + Coppercoat antifouling
- Machine polishing hull and deck moulding
- Boot top and cove strip repainted with two coats of Awlgrip dark blue navy
- Two new Sahara 750 electrical bilge pumps
- New deck cowls
- New 4 person Sea Safe life raft
- New led interior lights

Total refurbishment of Taylors 043 gas cooker
New gas bottles stowage and gas safety certificate
New fridge and evaporator
Two New foot pumps in galley, one for the fresh water, the other one for the salt water
New Lavac toilet
Yanmar 3GM30F, 24HP with 1500 engine hours (the engine has been totally serviced in 2017)
New diesel stainless steel tank
New propeller shaft rope cutter
New MGDuff anodes
Eberspächer heater (refurbished by Kruegers Ltd in 2018).
New sunbrella sprayhood + bimini + cockpit enclosure by Sanders Sails
The boat is cutter rigged with two Facnor SD furling systems.
New lazy jacks
All sails by Sanders Sail in very good condition.

LYING: Lymington

To avoid disappointment early viewing is very much advised.

Specification

BOAT NAME: WHITE ROSE

MAKE & MODEL: TRADEWIND 35

HULL MATERIAL:

Solid laminate fibreglass hull construction; isophthalic resins used for added resistance to osmosis; off-white gelcoat finish with blue waterline stripe and cavita line (repainted with 2 pack system of Blue Navy Awlgrip Polyurethane system in 2017); the previous antifoul coating has been stripped and the GRP hull has been epoxied with 5 coats of International Gelshield 200 has been applied in 2017; 3 coats of Coppercoat antifouling has been applied in 2017; hand laid-up moulded fibreglass deck & superstructure; new Treadmaster non-slip decking surfaces to all main deck areas (2017); teak cockpit seating with teak grated cockpit sole; teak-capped bulwarks and exterior trim; encapsulated long keel with lead ballast; keel-hung rudder attached to rod quadrant and wheel steering system (Whitlock Cobra 5R Deluxe steering System); new rudder rings and bearings (2017).

YEAR: 1992

LENGTH OVER ALL: 35.01' / 10.67m

LENGTH OVER WATERLINE: 25.82' / 7.87m

BEAM: 10.50' / 3.20m

DRAFT: 5.51' / 1.68m

KEEL TYPE: Encapsulated long keel with lead ballast

DISPLACEMENT: 19442 lbs./ 8819 kgs. [Ballast (lead): 8287 lbs. / 3759 kgs.]

FUEL TANKAGE:

48 gals. / 182 ltrs. in 1 new stainless steel tank (2016) with new tank gauge (2016)

WATER TANKAGE:

90 gals. / 341 ltrs. In 1x GRP tank in bilge, cleaned in 2017 and fitted a new water tank VDO gauge (2017).

PLUMBING SYSTEM:

All superior composite seacocks and through-hull fittings by Trudesign new 2017.

ENGINE MODEL: Yanmar 3GM30F engine no. 10805

ENGINE HP: 24 H.P. at 3400 rpm

ENGINE HOURS: 1509 hours (March 2018)

SAIL DRIVE OR SHAFT DRIVE:

Shaft drive 3 fixed blades propeller (3 coats of Marlin Velox Plus antifouling in 2017) driven via stainless steel shaft + new rope cutter (2017)

DATE LAST ENGINE SERVICE: In November 2017 the engine has been fully serviced;

AGE OF STANDING RIGGING:

All the standing riggings has been replaced with new ones in 2017 with all Sta-Lok terminals, Kos stainless steel wire and new Sta-Lok bronze turnbuckles; Eurospars silver-anodised alloy spars; deck stepped masthead cutter-rigged mast with one set of inline spreaders; stainless steel bowsprit to support yankee; Facnor SD180 manual yankee furler; Facnor SD130 manual staysail furler; emergency forestay fitting for hank-on-storm-jib; trisail track on mast; spinnaker pole vertically stowed on mast; backstay insulated to allow fitment of SSB radio (new 2017); mainsheet track forward of helm pedestal; Spinlock jammers on mast; winches: 2x 46ST 2-speed manual Andersen self tailing primary winches; 2x 28ST 2-speed manual Andersen self tailing staysail winches; 2x 10 1-speed manual Andersen halyard winches on mast; 1x 10 1-speed manual Andersen mainsail reefing and outhaul winch on mast.

DATE LAST ANTIFOULED: 2017 with 3 coats of Coppercoat.

ACCOMMODATION SUMMARY:

One dedicated accommodation cabin with double berths, plus further single berths in saloon via single settee berths to port and starboard; lee cloths for saloon; teak joinery throughout; solid mahogany sole-boards; blue flame-retardant upholstery in saloon and accommodation cabin (with new hard foam by Sander Sails 2018); new headlining's in white vinyl (2017); white Formica galley top and heads surfaces; new insulation of both the coach roof (10mm on top plus 6mm on lateral side with Aspen Aerogel Spaceloft) and hull above the waterline (50mm) in 2017

NUMBER OF SEPARATE SLEEPING CABINS:

One dedicated accommodation cabin forward with 2 large single berths with infill piece to create large double

DOES SALOON CONVERT TO A DOUBLE OR SINGLE BERTH:

Yes, there are 2 single berths via single settee berth to starboard and one L-shaped settee berth to port, both fitted with lee cloths

TOTAL NUMBER OF BERTHS: 4

NUMBER OF HEADS:

One large heads compartment to port with shower tray and mirror fronted lockers fitted with new Lavac manual toilet (2017). Shower and sink in heads pumped out both manually or by electric drain shower pump (new 2017); hot & cold pressurised water in heads/shower compartments; Formica top heads surface

GALLEY AND GALLEY EQUIPMENT:

L-shaped galley to port with stove, insulated fridge, twin stainless steel sinks and stowage for food, pots, pans, cutlery and crockery; Taylor 043 gimballed stainless steel stove with two burners, oven & grill (fully refitted in 2018); twin stainless steel sinks with pressurised hot & cold water; Frigomatic new 12v DC refrigeration compressor + evaporator and digital fridge thermostat (2017); new 2 Whale Gusher foot pumps, one for salt water and one for fresh water (2017); Formica top galley surface.

Fresh water & water heating system: 12v DC pressurised water system + one Whale Gusher foot pump in galley; hot water supplied via engine driven calorifier or 230v AC immersion heater element powered by shore power, one Whale Gusher foot pump for salt water in the galley

SAILS:

Sanders Sails - semi-battened mainsail with three reefs (2003 in very good conditions);
Sanders Sails - furling yankee with foam luff (2003 - foam luff and UV strip replaced 2009, in very good conditions);
Sanders Sails - furling staysail (2003 - UV strip replaced 2009, in very good conditions);
Sanders Sails - storm jib (2003 - new never used);
Sanders Sails - trysail (2003 - new never used);
Sanders Sails - gennaker with snuffer (2003, new never used)

RIGGING AND SPARS:

All the standing riggings has been replaced with new ones in 2017 by XW Rigging with all Sta-Lok terminals toggle&forks and eyes, Kos stainless steel wire and new Sta-Lok bronze turnbuckles; Eurospars silver-anodised alloy spars; deck stepped masthead cutter-rigged mast with one set of inline spreaders; stainless steel bowsprit to support yankee; Facnor SD180 manual yankee furler; Facnor SD130 manual staysail furler; emergency forestay fitting for hank-on-storm-jib; trisail track on mast; spinnaker pole vertically stowed on mast; backstay insulated to allow fitment of SSB radio (new 2017);

mainsheet track forward of helm pedestal; Spinlock jammers on mast.

WINCHES AND DECK EQUIPMENT:

Winches package from Andersen consisting of:

2x 46ST 2-speed manual Andersen self tailing primary winches;
2x 28ST 2-speed manual Andersen self tailing staysail winches;
2x 10 1-speed manual Andersen halyard winches on mast;
1x 10 1-speed manual Andersen mainsail reefing and outhaul winch on mast;
Stainless steel pulpit, pushpit and guardwire stanchions;
Side-boarding gate;
Teak grabrails on coachroof;
Stainless steel boom-crutch;
Mooring cleats;
4 separate tracks on deck, two for the yankee lines (starboard & port) and two for staysail lines (starboard & port);
Opening deckhead hatches;
Two stainless steel dorade cowl vents adjacent to mast (new 2017)

GROUND TACKLE AND WINDLASS:

Lofrans Tigre electrical windlass 1500 watt with foot switches + wi-fi remote control + remote switch in the cockpit (all new 2017);
45 lbs Manson Supreme anchor (new 2017) + 35 lbs CQR anchor + 35 lbs Danforth kedge anchor;

PROP/ ROPE CUTTER:

3-bladed bronze fixed propeller driven via stainless steel shaft + rope cutter (new 2017)

BATTERIES/ELECTRICS/SHORE POWER:

12v DC domestic system and 230v AC ring-main from shore power;
1x 110Ah 12v DC engine start battery (2015);
3x 145Ah 12v DC T-1275 Trojan Battery Deep Cycle house batteries (new 2017);
4x metal heavy duty batteries isolators 250A each (new 2017)
Battery charger: Waeco Perfect Charge MCA 1250 (new 2017);
Victron Energy Phoenix Inverter 12/1200VA (new 2017);
12v DC and 230v AC BEP Marine electrical control switch panels (new 2017);
NASA Marine BM-2 Compact battery monitor (new 2017);
All the electrical System has been rewired and labelled in 2017;
Engine mounted alternator (totally refurbished in 2017) with booster/regulator and Victron Energy Argo FET Battery Isolator (new 2017);
230v AC shore power system with ring-main and socket internally + circuit breaker and galvanic isolator;
Two Attwood Sahara S750 automatic-switch bilge pumps;
3x 12v USB sockets at chart table;
4x 230v sockets (one under the chart table; one in the galley; one in the saloon; one in the forward cabin)

WIND GENERATOR/SOLAR PANELS:

Rutland 914i wind generator on stainless steel pole aft (new 2017) with HRDi Charge Controller (new 2017); Solara 420 solar panel mono crystal 105watt + Victron Energy BlueSolar MPPT 75/15 charge controller (new 2017)

ELECTRONICS/INSTRUMENTS/ VHF/AUTOPILOT:

B&G Hydra analogue system including:
Hydra multi-repeater at navigation station;
Wind speed display;
Wind direction display;
Magnified wind display;
Speed/log direction display;
Raymarine i50 depth display and transducer (new 2017);
Raymarine Evolution Autopilot c/w p70s Control Head. ACU-200 & Type 1 Mechanical Linear Drive (new 2017);
Raymarine eS75 Chart Plotter Display with Quantum Radar (new 2017);
Seatec AIS-6 AIS Receiver connected with Raymarine chart Plotter (new 2017);
Furuno GPS GP-32;
NASA Easy Navtex + H Vector antenna (new 2017);
NASA MeteoMan clock, barometer, etc.;
ICOM IC-M601 VHF with DSC (2003);
Clock + barometer;
Plastimo Horizon 185 steering compass.

ENTERTAINMENT/CD AND RADIO:

Boss radio/CD player + USB connection with two speakers in saloon.

SELF STEERING:

Hydrovane wind self-steering system (2009).

SAFETY EQUIPMENT:

Sea Safe offshore self righting raft 4 person ISO/ISAF4 (new 2017);
Horseshoe buoy;
Jackstays;
Firdell Blipper radar reflector;
Two Attwood Sahara S750 automatic-switch bilge pump (new 2017);
1x Whale manual bilge pump (2001);
Engine can be used as an emergency bilge pump turning a manual switch valve;
3 Fire extinguishers;
Remote gas electrical shut-off valve in galley + remote manual shut-off valve in aft locker;
New gas certificate (2018).

General note on safety equipment: Any safety equipment such as life rafts, Epirbs, fire extinguishers and flares etc. are usually personal to the current owner(s) and if being left on-board as part of the sale of a used vessel may require routine servicing, replacement, or changing to meet a new owner's specific needs.

DINGHY AND OUTBOARD (available with separate negotiation):

Avon 2.8m Hypalon Inflatable;
Mariner 3.5 HP 4 stroke.

OTHER EQUIPMENT:

Eberspächer diesel hot air cabin heating (serviced by Krueger LTD 2018);

OWNERS COMMENTS:

White Rose is a very wonderful sailing boat, very safe and comfortable at sea or at anchor and excellent live-aboard. I really love this boat and I'm very saddened to have to sell it due to unforeseen family circumstances. I purchased White Rose in 2016 for my dream circumnavigation. She has been professionally re-fitted over the last two years at a cost of over £60,000. However my family issue means the trip has had to be postponed and the yacht is now for sale.

THE VESSEL IS LYING:

Lymington

Available to view by appointment

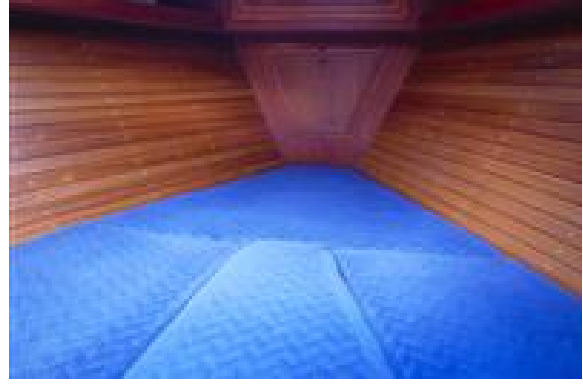
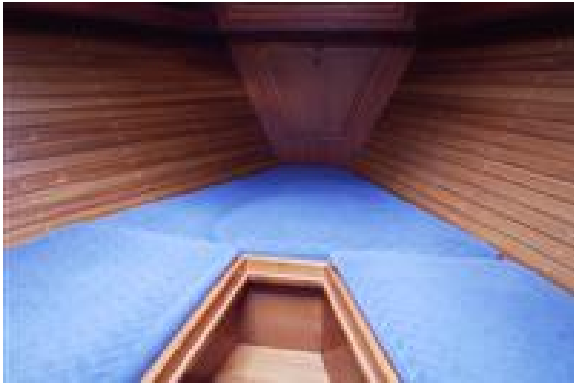
Please note all our listed yachts are privately owned and located in the owner's home port or marina. Due to the varying geographical marina locations of our yachts and the subsequent travel time and distances involved, please only make travel arrangements to view if actively considering purchase.

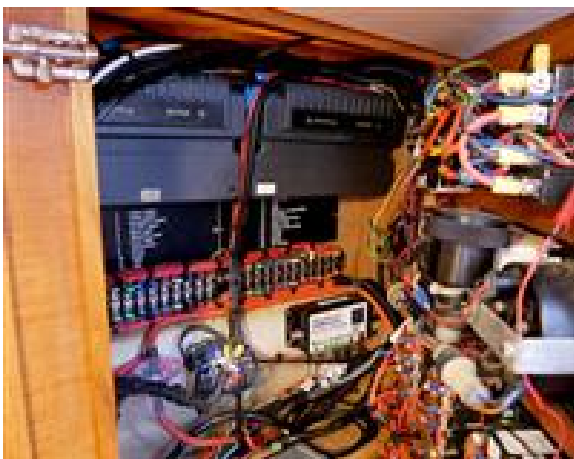
Office Hours Mon- Fri 09.30 - 17.30
Saturday by prior appointment

For more information or to arrange an appointment please contact John Rodriguez Yachts

Tel: +44 (0)7505 485 950
email: john@jryachts.com













John Rodriguez Yachts provides professional ABYA yacht conveyancing & legal transfer of vessel title. The details of all vessels are offered in good faith but the correctness and accuracy of these particulars is not guaranteed and they do not constitute a part of any contract. We cannot guarantee nor warrant any vendor/third party supplied paperwork or the condition of the vessel. A buyer is strongly advised to instruct his agents, or marine surveyors, to investigate such details as the buyer desires validated. Although not mandatory in the UK we would always suggest appropriate training be undertaken before using a vessel. All vessels are offered subject to prior sale, price change, or withdrawal without notice. John Rodriguez Yachts is a trading name of John Rodriguez Yachts LLP Reg. No. OC416718 (England and Wales). Registered office C/O Connect Accounting, 15 Western Parade, Barnet, Herts, England, EN5 1AH. VAT No: 180730322. FCA FRN Number: 676493.