

# John Rodriguez

## — YACHTS —

WWW.JRYACHTS.COM

John Rodriguez Yachts, Hillcrest, Rockbourne Rd, Fordingbridge, Hants, SP6 1QF, UK

Tel: +44 (0)7505 485 950 | john@jryachts.com



## Beneteau Oceanis 46

**£125,000 GBP tax paid/included**

**Italy**

**Bow Thruster, Heating and Electric Cockpit Winch**

Manufacturer/Model	Beneteau Oceanis 46
Name	Echo
Year	2009
Category	Sail
New or used	Used
Status	Available
Price	£125,000 GBP
Tax/VAT status	Paid / included
Price comment	Bow Thruster, Heating and Electric Cockpit Winch
Lying	Monfalcone, Italy
Reference	Ben46KN

## Specifications

Length overall	14.39 m
Length waterline	13.68 m
Beam	4.25 m
Draft	1.92 m
Displacement	10,000 kg
Hull	GRP
Keel	Bulb keel

## Description

Beneteau Oceanis 46 For Sale

Echo is set up for Med cruising and is British flagged and privately owned.

Incredibly bright and spacious, the sought after three cabin accommodation is very good indeed. All cabins have large comfortable double berths with plenty of space. She is stylishly fitted out with a very workable secure galley and a generous and comfortable saloon for entertaining and dining.

An attractive, powerful yacht with high levels of comfort and good seakeeping abilities, Echo is well specified and will be an enjoyable yacht to own.

With only two owners from new, her full details are in the specification section, but highlights include:

Three cabin, two head version  
Full teak decking  
Eberspacher diesel powered cabin heating system  
Harken powered winch for mainsail  
Bow thruster  
3 blade folding propeller with rope cutter  
Composite folding Passarelle  
Sprayhood and Bimini  
Electric anchor windlass with remote and chain counter  
4 new leisure batteries (new 2018)  
Raymarine E80 chart plotter and GPS  
3 ST70 display units  
Icom VHF radio at chart table with remote at helm position  
Raymarine 2KW Radar  
Raymarine Autopilot  
Bluetooth radio/music player (new 2018) with internal and external speakers  
Flat screen television/DVD player

LYING: Nautec Mare, Monfalcone, Italy

Available to view by appointment

Please note all our listed yachts are privately owned and located in the owner's home port or marina. Due to the varying geographical marina locations of our yachts and the subsequent travel time and distances involved, please only make travel arrangements to view if actively considering purchase.

Office Hours Mon- Fri 09.30 – 17.30

Saturday by prior appointment

For more information or to arrange an appointment please contact John Rodriguez Yachts

Tel: +44 (0)7505 485 950

email: [info@jryachts.com](mailto:info@jryachts.com)

## Specification

BOAT NAME: ECHO

MAKE & MODEL: Beneteau Oceanis 46

HULL MATERIAL: GRP

YEAR: 2009

LENGTH OVERALL: 14.39 metres

LENGTH OVER WATERLINE: 13.68 metres

BEAM: 4.25 metres

DRAFT: 1.92 metres

KEEL TYPE: FIN WITH BULB

DISPLACEMENT: 10 tonnes

FUEL TANKAGE: 200 litres

WATER TANKAGE: 530 litres

ENGINE MODEL: 4JH4TE

ENGINE HP: 75 HP

ENGINE HOURS: 2500 approximately

SAIL DRIVE OR SHAFT DRIVE: Shaft drive

DATE LAST ENGINE SERVICE: March 2018

AGE OF STANDING RIGGING: Original

DATE LAST ANTIFOULED: July 2018 (will be antifouled March 2019)

#### ACCOMMODATION SUMMARY

Three cabin two head version with two armchairs in saloon, finished in cream leather upholstery (new 2014)

NUMBER OF SEPARATE SLEEPING CABINS: 3

TOTAL NUMBER OF BERTHS: 6

NUMBER OF HEADS: 2

#### GALLEY AND GALLEY EQUIPMENT:

2 stainless steel sinks, Stainless steel 3 burner gimballed cooker with oven and grill, top opening 100 litres coolbox, 130 litres refrigerator, inbuilt microwave.

#### SPECIFICATION SECTION

##### SAILS:

Sobstad fully battened mainsail with slab reefing, zip up sail cover  
Sobstad 140% roller furling Genoa

##### RIGGING AND SPARS:

Double spreader rig, stainless steel standing rigging  
All control lines led to cockpit. 2 reefs to the main.  
Both main and genoa sails can be hoisted, set and dropped from the cockpit.

##### WINCHES AND DECK EQUIPMENT:

Harken powered winch for mainsail  
3 Harken manual winches  
Bathing platform with access ladder and shower  
Composite folding Passarelle  
Sprayhood and Bimini  
Full teak decking

##### GROUND TACKLE AND WINDLASS:

20kg CQR anchor with 25 metres of chain and 50 metres of rope  
Electric anchor windlass with remote and chain counter

#### BOW THRUSTER/PROP/ ROPE CUTTER:

Bow thruster  
3 blade folding propeller with rope cutter

#### BATTERIES/ELECTRICS/SHORE POWER:

4 leisure batteries (new 2018)  
1 engine battery (new 2017)  
1 bow thruster battery  
2 battery chargers  
240/12 volts inverter  
240 volts shore power cable and extension lead

#### ELECTRONICS/INSTRUMENTS/ VHF/AUTOPILOT:

Raymarine E80 chart plotter and GPS  
3 ST70 display units  
Icom VHF radio at chart table with remote at helm position  
Raymarine 2Kw Radar  
Autopilot

#### ENTERTAINMENT/TV/RADIO:

Bluetooth radio/music player (new2018) with internal and external speakers  
Flat screen television/DVD player

#### SAFETY EQUIPMENT:

3 fire extinguishers in accommodation  
1 fire extinguisher in engine compartment  
Fire blanket in Galley  
Gas detector  
Electric and manual bilge pumps  
Emergency tiller  
Coastal flare pack

General note on safety equipment: Any safety equipment such as life rafts, Epirbs, fire extinguishers and flares etc. are usually personal to the current owner(s) and if being left on-board as part of the sale of a used vessel may require routine servicing, replacement, or changing to meet a new owner's specific needs.

#### OTHER EQUIPMENT:

Eberspacher diesel powered cabin heating system  
Numerous fenders and mooring warps  
Kedge anchor with 20 metres of chain  
Long line  
Ball and triangle  
Water hose pipe

#### Owner's Comments:

We bought Echo in Portsmouth in order to fulfil our 5-year retirement dream of sailing the Mediterranean and Adriatic seas. After a few weeks of familiarisation on the South Coast, we embarked on the journey to the Med, across the bay of Biscay and down the Atlantic coast of Spain and Portugal. From there we meandered along the Mediterranean coastline enjoying Spain, France, Italy, Corsica and finally Croatia.

Echo is a classic Mediterranean cruiser, she handles perfectly, turns on a sixpence and is very responsive. She has seen mainly fair-weather sailing, however, across Biscay she handled a Force 9 storm with ease and is well balanced when sailing under full sail reefed. Under full sail, she easily reaches 8/9 knots. Her cruising speed under power is 6.5 knots at 1900rpm.

The layouts, both above and below deck are very practical, and she is well equipped for al fresco living on deck and for living in the saloon. She is very comfortable with six on board due to the large cockpit, saloon, double cabins and ample storage.

Echo is everything we ever wanted and more for our adventure. We will miss her but now I am seventy and arthritic feel I need to move to a powerboat!

LYING: Nautec Mare, Monfalcone, Italy

Available to view by appointment

Please note all our listed yachts are privately owned and located in the owner's home port or marina. Due to the varying geographical marina locations of our yachts and the subsequent travel time and distances involved, please only make travel arrangements to view if actively considering purchase.

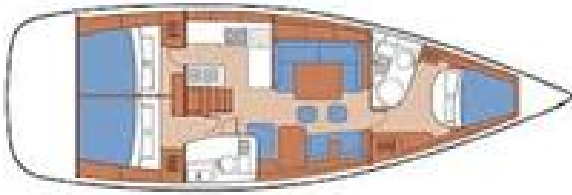
Office Hours Mon- Fri 09.30 – 17.30

Saturday by prior appointment

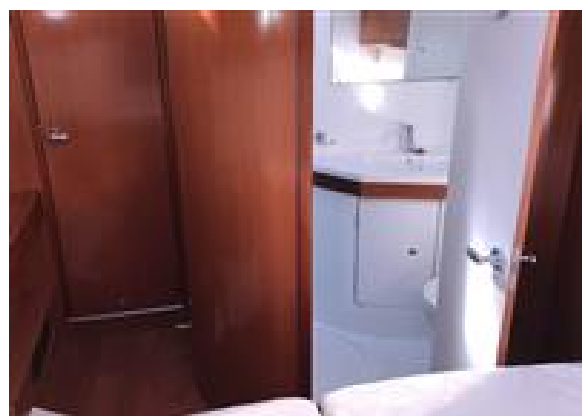
For more information or to arrange an appointment please contact John Rodriguez Yachts

Tel: +44 (0)7505 485 950

email: [info@jryachts.com](mailto:info@jryachts.com)



















John Rodriguez Yachts provides professional ABYA yacht conveyancing & legal transfer of vessel title. The details of all vessels are offered in good faith but the correctness and accuracy of these particulars is not guaranteed and they do not constitute a part of any contract. We cannot guarantee nor warrant any vendor/third party supplied paperwork or the condition of the vessel. A buyer is strongly advised to instruct his agents, or marine surveyors, to investigate such details as the buyer desires validated. Although not mandatory in the UK we would always suggest appropriate training be undertaken before using a vessel. All vessels are offered subject to prior sale, price change, or withdrawal without notice. John Rodriguez Yachts is a trading name of John Rodriguez Yachts LLP Reg. No. OC416718 (England and Wales). Registered office C/O Connect Accounting, 15 Western Parade, Barnet, Herts, England, EN5 1AH. VAT No: 180730322. FCA FRN Number: 676493.