

# John Rodriguez

## — YACHTS —

WWW.JRYACHTS.COM

John Rodriguez Yachts, Hillcrest, Rockbourne Rd, Fordingbridge, Hants, SP6 1QF, UK

Tel: +44 (0)7505 485 950 | john@jryachts.com



## Najad 460

**£260,000 GBP tax paid/included**

**United Kingdom**

**New Yanmar Engine 2016 - Blue Water Equipped**

Manufacturer/Model	Najad 460
Name	Infinity B
Year	2001
Category	Sail
New or used	Used
Status	Available
Price	£260,000 GBP
Tax/VAT status	Paid / included
Price comment	New Yanmar Engine 2016 - Blue Water Equipped
Lying	Hamble, United Kingdom
Reference	N460IBFAH

## Specifications

Length overall	13.95 m
Length waterline	11.88 m
Beam	4.28 m
Draft	2.20 m
Displacement	15,500 kg
Hull	GRP
Keel	Fin keel

## Description

Najad 460 For sale

A powerful, seaworthy, high quality Swedish centre cockpit cruising yacht, this particular example has the benefit of a new 97Hp Yanmar engine (2016), electric mainsail furling, electric genoa furling, electric winches, air conditioning, bow thruster and many significant upgrades.

With the highly desirable blue water cruising layout of a large aft cabin (with double island berth), fwd twin bunk cabin, fwd double cabin and two heads, she is the ideal family or short handed long distance cruising yacht.

Easily handled thanks to her electric sail controls & bowthruster and self-sufficient thanks to her generator, wind generator, solar panels and watermaker, she is a well-appointed luxurious yacht, capable of taking her owners far and wide in comfort and safety.

Built in 2001, launched in 2002 and in only her second ownership, she has been thoughtfully upgraded by her current knowledgeable owners.

More details are in the full specification section but her notable highlights include:

- New Yanmar 97 HP engine 2016 (Circa 450 hrs)
- Selden fractional rig
- Selden electric mainsail and electric genoa furling
- Electric winches
- Comprehensive wardrobe of Sanders Sails 2013
- Bowthruster
- Air Conditioning
- Heating
- Water Maker
- Washing machine
- Fischer Panda 240v 6 kW Generator
- X 6 Solar Panels
- Wind Generator
- Raymarine 140C Chartplotter with HD Colour Radar - 2013
- Raymarine ST60 Instruments
- Upgraded X Series Raymarine Course Computer with gyro and Mamba Drive 2013
- Icom SSB
- Weather Dock AIS Class B Transponder – 2012
- Cockpit Extension / Tent - 2013
- Bimini – 2018
- Manson Supreme 60 lb main anchor - 2013
- New 90m Acco HT ISO galvanised chain 3/8 - 10mm - 2018
- New Lofrans X3 windlass 24v / 1700w - controls in cockpit and anchor locker – 2019

(Photos and video - some of the owner's personal items that are not included in the sale are marked with blue tape.)

Lying: Hamble

Available to view by appointment, please contact John Rodriguez Yachts

FULL SPECIFICATION:

Boat Name: Infinity B

Make & Model: Najad 460

Year: 2001 (launched 2002)

Hull Material: GRP

Keel Type: Fin

Length Overall: 13.95m

Length Over Waterline: 11.88m

Beam: 4.28m

Draft: 2.2m

Displacement: 15.5t

Fuel Tankage: Stainless Steel 460 l

Water Tankage: Stainless Steel 565 l

Engine Model: 4JH4-HTE1 – NEW 2016

Engine Hp: 97 HP

Engine Hours: 450

Date Last Engine Service: April 2019 – Oil, Filters, Impellers etc onboard for next service

Sail Drive Or Shaft Drive: Shaft

Age Of Standing Rigging: Forestay 2016, Inner Forestay & Rearstay 2014, Shrouds original.  
Rigging survey 2014 & 2016

Date Last Antifouled: Coppercoat 2014 (Lead keel now requires re-doing)

#### ACCOMMODATION:

Number Of Sleeping Cabins (Excluding Saloon): 3

Number Of Double Berths (Excluding Saloon): 2

Number Of Single Berths (Excluding Saloon): 2

Number Of Single Berths In Saloon: 2

Does Saloon Convert To A Double: No

Number Of Heads: 2

Holding Tanks: 2 Stainless steel (150 l)

#### GALLEY EQUIPMENT:

The galley was upgraded in 2014 with Corian work tops, GN Espace cooker and new freezer. The galley also has microwave, salt water pump, fresh water-filter and cover for burners.

#### ADDITIONAL ACCOMMODATION SUMMARY NOTES:

Infinity B has an impressive owner's cabin at the rear which has a large island bed and en-suite head and shower. There is good storage, ventilation and TV.

The passage to the rear cabin passes the chart table and has two very large storage cupboards which are immediately opposite the engine room door.

The well laid-out and well-maintained engine room provides easy access to the engine, generator, air-conditioners, heating and hot water and steering systems.

The saloon has L shape seating round a teak inlaid table and a bench seat opposite. There are two sets of lee clothes.

The forward cabins provide flexible accommodation comprising of heads with shower, bunk room and double forepeak. The bunks convert directly into a settee creating a dressing room / annex for the forepeak.

Note: All cabins benefit from air-conditioning and Caframo fans. All the interior cushions are in outstanding condition as they have been covered since new with removable day covers.

Climma Airconditioning in saloon and forward & aft cabins – pump rebuild 2019.

Soba Babynova 1000 washing machine - new 2019

Erberspacher heating in all cabins and heads

#### SAILS AND CANVAS:

##### Working Sails

Genoa - Sanders Sails - 2013

Staysail - Sanders Sails - 2013

Main Sail - Sanders Sails – 2013

##### Storm Sails

New/Unused Storm Jib - Sanders Sails - 2013

New/Unused Trysail - Sanders Sails - 2013

The mast is fitted with Selden Trysail Track – 2013

##### Spare Sails

New/Unused original Najad 106% working jib

Original Najad Genoa in good working order

Original Najad Main Sail in good working order

##### Canvas

Sprayhood/Dodger - Dolphin Sails - 2013

Sprayhood storm insert – Dolphin Sails - 2013

Cockpit Extension / Tent – Dolphin Sails - 2013

Bimini with Solar Panels - 2018

Foredeck sunshade - 2018

Binnacle/Wheel Cover - 2019

#### RIGGING:

Selden electric mainsail and electric genoa furling.

All control lines are run to the cockpit for safe and short hand sailing.

Infinity B benefits from a Selden fractional rig with 2 pairs of swept spreaders and lower shrouds.

She originally had a removable inner forestay which was upgraded in 2016 to a furling staysail. (She can readily be converted back).

The running backstays have been greatly improved with locking cleats and retrieval lines for shorthanded sailing.

Infinity B has two spinnaker poles to enable both head sails to be safely poled out for downwind sailing. She is also fitted with a Walder Gybe Preventer to provide safe and controlled gybing.

All the halyards were upgraded to dyneema in 2013 and an additional Lewmar halyard winch on port side of the mast at the same time.

There is also a removable bowsprit which could be used with downwind sails.

#### WINCHES AND DECK EQUIPMENT:

##### Winches

Primary 24v Electric Andersen 58 ST two speed

Secondary Andersen 46 ST

##### Furlers

Genoa – Electric Furlex 400E - 2016

Staysail - Selden Furlex 300

Main - Integrated Selden electric

The port AFT pushpit has been professionally rebuilt to integrate, Liferaft, wind generator, engine davit and mast antennae, deck lights etc.

The centre cockpit is protected by a glass windscreen with grab handles.

There are two very large aft deck lockers as well as a large cockpit locker.

All the deck hatches were replaced in 2011.

#### GROUND TACKLE AND WINDLASS:

Manson Supreme 60 lb main anchor - 2013

New 90m Acco HT ISO galvanised chain 3/8 - 10mm - 2018

New Lofrans X3 windlass 24v / 1700w - controls in cockpit and anchor locker – 2019

## BOW THRUSTER/PROP:

Maxpower bow thruster 24v refurbished 2013  
3 blade Propeller  
Lexofold propeller – blades upgraded 2017

## POWER SYSTEMS:

### Batteries

House Batteries - 4 x MasterVolt 225AH in 24v bank - 2017  
Engine - 1 AGM - 2018  
Ample Battery management system  
(Note- All internal and navigation lamps are LED.)

### Alternators

Balmar 140 amp / 24v with Balmar regulator - 2014  
Yanmar 90 amp /12v – 2016

### Chargers

Victron240 / 110 v - 100 amp / 24v - 2016  
C-Tek 240v - 4 amp /12v – 2014

### Inverter

3000W 24v to 240v – 2014

### GenSet

Fischer Panda 240v 6 kW low hours

### Solar

6 x 50w semi flexible solar panels fitted to bimini - 2018  
Victron MPPT controller – 2019

### Wind

Eclectic D400 24v / 400w – 2018

## ELECTRONICS:

### Electronics – Communications

VHF Icom IC-M603 at chart table with command mic in cockpit - 2012  
Handheld VHF with DSC  
SSB Icom 802 + AT140 tuner + Pactor 4 modem - 2013  
RedBox WIFI Booster and Multiplexer for AIS  
Sony CD/Radio with Bose Speakers in saloon and waterproof speakers in cockpit 2014  
Sat Phone antenna point

### Electronics - Navigation – Cockpit

Raymarine 140C Chartplotter with HD Colour Radar - 2013  
Raymarine ST60 Wind, ST60 Depth, ST60 Speed  
Raymarine ST60+ Autohelm – 2018  
Raymarine Remote Control for helm

### Electronics - Navigation - Chart Table

ICS Navtex NAV6 - 2013  
Raymarine ST60 Multi Function  
Raymarine NMEA Interface for Laptop  
Upgraded X Series Raymarine Course Computer with gyro and Mamba Drive 2013

### Electronics – Safety

Weather Dock AIS Class B Transponder - 2012  
Echo Max Radar Target Enhancer - 2012  
GME MT403G EPIRB M - Serviced 2018  
Mast Speaker / Hailer also linked to foghorn and panic button – 2012

## WATERMAKER:

Spectra Newport Water Maker 24v 60lt/hour - New membranes 2014, Major rebuild 2016.

## SAFETY:

Fire Extinguishers

Jon Buoy  
Life Raft  
Epirb

General note on safety equipment: Any safety equipment such as life rafts, Epirbs, fire extinguishers and flares etc. are usually personal to the current owner(s) and if being left on-board as part of the sale of a used vessel may require routine servicing, replacement, or changing to meet a new owner's specific needs.

#### OWNERS PERSONAL COMMENTS:

We have been sailing now for nearly 40 years. We started on Rutland Water fleet racing Dart 18s. When our son was born we progressed to a 23ft daysailer. After a few years we felt limited by the lake and bought 31ft British Hunter on the East Coast.

This wetted our appetite and about 15 years ago we bought a virtually new Najad 380 in North Wales. She was stunning, powerful, incredibly seaworthy and took us to a completely new level of sailing. We had her about 7 years and did many crossings to Holland, Channel Islands and Brittany. We learned a huge amount from her.

We started looking for a strong Bluewater Cruiser in 2013 and focused on Najads because we were so pleased with our Najad 380. We decided that the Najad 490 was a bit too big and a bit too expensive.

We chose Infinity B a Najad 460 for the following reasons.:

- Great size for us.
- Bunk room for son's friends
- Two huge storage cupboards in passageway for bikes and foul weather gear
- Fabulous aft cabin
- Watermaker
- Genset
- Easy sail handling from a very safe and secure cockpit
- Light use
- And overall great value for money.

We had planned to keep Infinity B for very many years and we have invested heavily in improvements to Infinity B which include:

- New sails, main, genoa, staysail, storm jib and trisail (and track).
- Electric furlers for main and Genoa.
- New Manson anchor, HT chain and Lofrans windlass
- Dyneema halyards, improved running back stays.
- New electronics, chart plotter, radar, course computer, AIS etc etc.
- New charging systems, wind gen, Balmar alternator, solar, victron mains charger, inverter.
- Upgraded galley, corian, GN Espace, freezer etc.
- New washing machine.
- New engine Yanmar 4JH4 100hp.

We had originally planned on sailing to New Zealand but spent 6 seasons in The Caribbean instead, where we have had an absolutely fantastic time. Mandy was not keen on a Pacific Passage so we have decided to sell Infinity B. We have bought a beautiful apartment in the French Alps (Haute-Savoie) where Mandy can ski in the winter and where we can walk in the summer.

#### MANUFACTURER PROVIDED DESCRIPTION:

Designing a sailing yacht, capable of sailing all over the world and at the same time being comfortable and safe for the crew, requires a great experience of long-distance cruising yachts. The result is the Najad 460. A 46 foot sailing yacht with a powerful, extremely seaworthy hull of modern design.

Lying: Hamble

Available to view by appointment

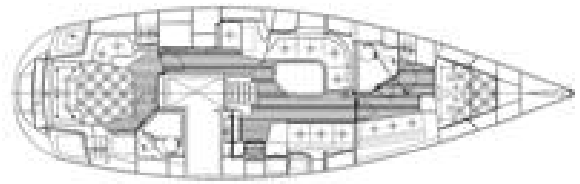
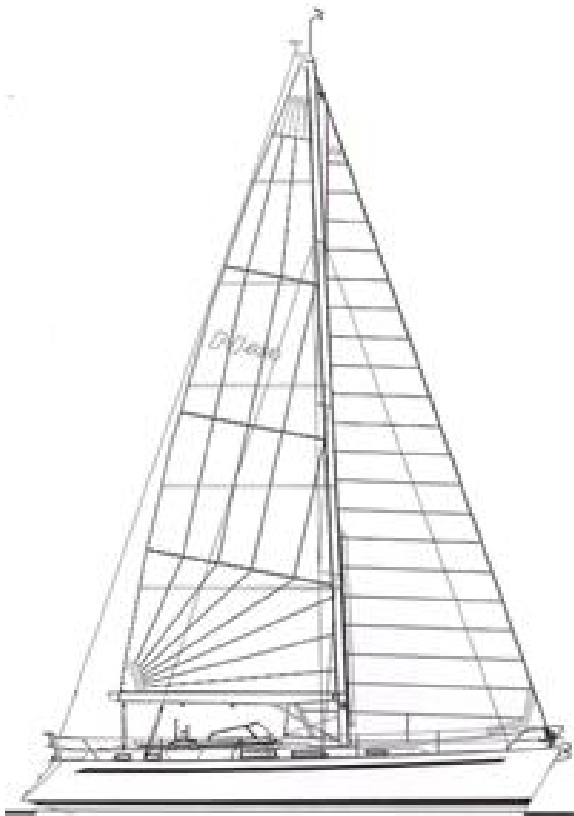
Please note all our listed yachts are privately owned and located at the owner's individual home port, marina or mooring and not one central location. Therefore due to the varying geographical locations of our yachts and the subsequent travel time and distances involved, please only make arrangements to view if actively considering purchase.

Office Hours Mon- Fri 09.30 – 17.30

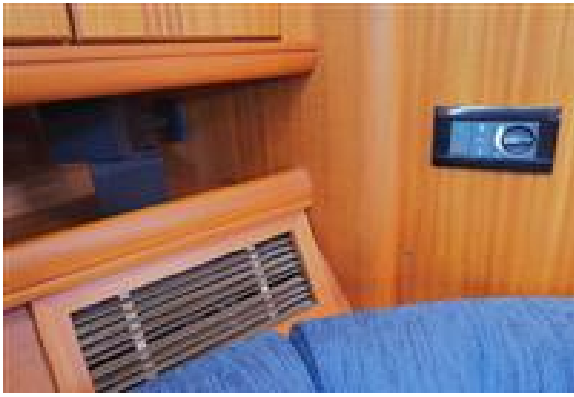
Saturday by prior appointment

For more information or to arrange an appointment please contact John Rodriguez Yachts

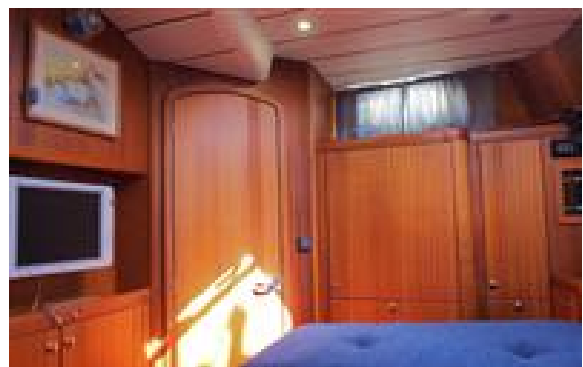
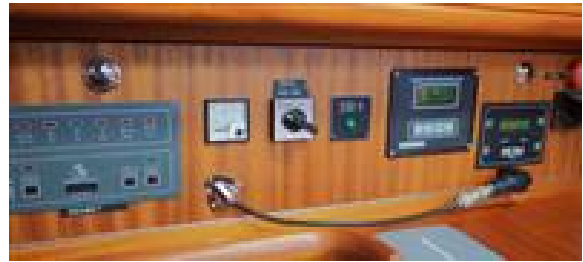
Tel: +44 (0)7505 485 950  
email: [info@jryachts.com](mailto:info@jryachts.com)

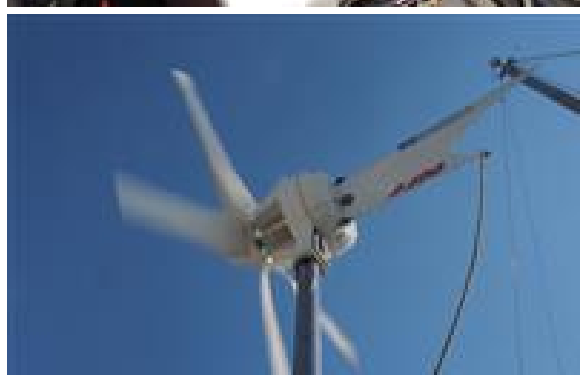
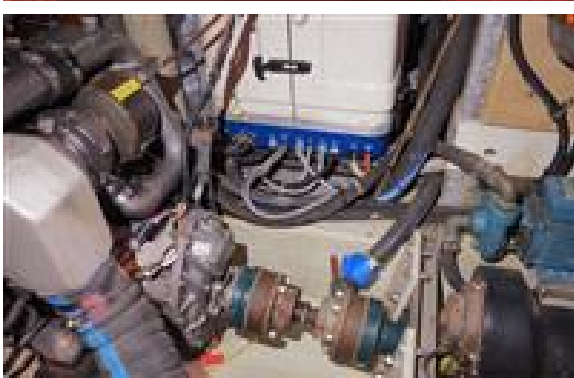




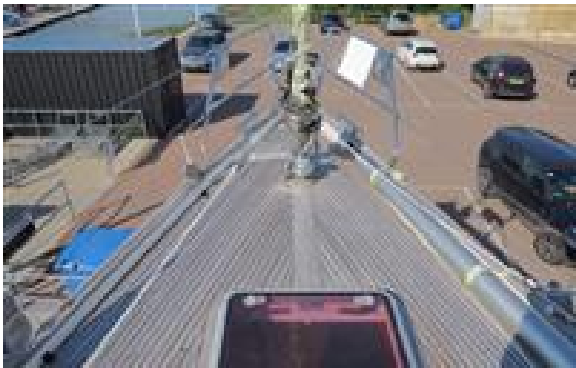














ABYA  
PROFESSIONAL  
YACHTING ASSOCIATION  
FULL  
MEMBER

John Rodriguez  
—YACHTS—  
[WWW.JRYACHTS.COM](http://WWW.JRYACHTS.COM)

See our news page on our home website for updates on safe viewings. John Rodriguez Yachts provides professional ABYA yacht conveyancing & legal transfer of vessel title. The details of all vessels are offered in good faith but the correctness and accuracy of these particulars is not guaranteed and they do not constitute a part of any contract. We cannot guarantee nor warrant any vendor/third party supplied paperwork or the condition of the vessel. A buyer is strongly advised to instruct his agents, or marine surveyors, to investigate such details as the buyer desires validated. Although not mandatory in the UK we would always suggest appropriate training be undertaken before using a vessel. All vessels are offered subject to prior sale, price change, or withdrawal without notice. John Rodriguez Yachts is a trading name of John Rodriguez Yachts LLP Reg. No. OC416718 (England and Wales). Registered office C/O Connect Accounting, 15 Western Parade, Barnet, Herts, England, EN5 1AH. VAT No: