

John Rodriguez

— YACHTS —

WWW.JRYACHTS.COM

John Rodriguez Yachts, Hillcrest, Rockbourne Rd, Fordingbridge, Hants, SP6 1QF, UK

Tel: +44 (0)7505 485 950 | john@jryachts.com



Trident Warrior 40

£79,950 GBP tax paid/included

United Kingdom

Extensivley upgraded 2015-2017

Manufacturer/Model	Trident Warrior 40
Name	Zulu Warrior
Year	1990
Category	Sail
New or used	Used
Status	Available
Price	£79,950 GBP
Tax/VAT status	Paid / included
Price comment	Extensivley upgraded 2015-2017
Lying	Portsmouth, United Kingdom
Reference	HMW40ZW

Specifications

Length overall	12.19 m
Length waterline	11.58 m
Beam	3.89 m
Draft	1.52 m
Displacement	12,500 kg
Hull	grp
Keel	Shoal keel

Description

Warrior 40 For Sale

New engine in 2005 and extensively upgraded in 2015 -2017.

The Warrior 40 once featured in Yachting Monthly's Blue Water dream boat list.

With her long fin keel, over-engineered construction, skeg hung rudder, cutter rig, bright airy saloon and good accommodation it's easy to see why, but with her comfortable interior and sea kindly motion she is equally at home being used as a quality family coastal cruising yacht.

Yachting Monthly commented:

"Her accommodation is very comfortable and well thought out, without being over-the-top in luxury. A family of four could make a three-year circumnavigation in this boat and still be able to talk to each other at the end of it. She has the form stability and easy motion for running down the Trades but is stiff enough to bash upwind."

This particular example was launched in 1990 then upgraded with new sails and a replacement engine in 2005, she has again been further extensively upgraded in 2015 -2017. She also features desirable factory fitted extras such as a bathing platform and a rigid windscreen.

More details are in the full specification section but her notable highlights include:

Vetus Bowthruster

New standing rigging including upgrade to twin backstays (2015)

Running rigging new (2015)

Profurl staysail roller furling system (2016)

Volvo-Penta MD22L saildrive engine (new 2005)

Diaphragm seal new (2015)

Darglow featherstream feathering propeller (2013)

Coppercoat professionally applied (2015)

Raymarine Digital Radar (2015)

ST60 Raymarine instruments (2013)

Raymarine e7 cockpit mounted plotter

Raymarine linear autopilot

Masthead AIS aerial installed 2015

1000w 240/12v inverter (2015)

3 x 105 ah domestic batteries (2015)

1 x 90 ah dedicated engine battery (2015)

Bep 12v battery distribution panel (2015)

Aerogen 4 wind generator (2015)

80w flexible solar panels mounted on spray hood (2017)

Sprayhood (2017)

Rigid windscreen (factory extra)

Bathing platform (factory extra)

Binnacle/cockpit table canvas cover (2017)

Windows & portlights refurbished & refitted with toughened glass (2015)

Blakes seacocks & speed/depth transducers (new 2015)

Tricolour navigation light in addition to deck level navigation lights led (2015)

Internal lighting upgraded to led (2015)

Hydrovane Wind Steering (New head, shaft and lower mounting 2015)

Plastimo 240 Dinghy

New electric bilge pump 2020

4 new fenders 2020

3 new snubbers 2019

New flare pack 2019

Lying: Portsmouth

Available to view by appointment, please contact John Rodriguez Yachts

FULL SPECIFICATION:

Boat Name: Zulu Warrior

Make & Model: Trident Warrior 40

Hull Material: GRP Lloyds A1 Lay-Up

Year: 1990 (Hull Number 75 of 131)

Length Overall: 40'

Length Over Waterline: 38'

Beam: 12.9'

Draft: 5'

Keel Type: Long Fin Keel (Shoal Draft)

Displacement: 12.5 tonne

Engine Model: Volvo-Penta MD22L (new 2005)

Engine HP: 56HP

Engine Hours: Approx 40 hours since major service and tachometer replacement 2015 – believed circa 900 hours in total

Sail Drive Diaphragm Seal: New 2015

Fuel Type: Diesel

Fuel Tankage: 190 Litres with sight glass

Water Tankage: 590 Litres in two tanks (can be isolated or linked)

ACCOMMODATION SUMMARY:

Comfortable, well laid out accommodation with bright airy saloon, large galley, two heads and three sleeping cabins.

Number of Separate Sleeping Cabins: Three (not including saloon)

Total Number of Berths: 6

Does Saloon Convert to Berth: No

Number of Heads: two both with shower facilities - aft Lavac toilet pump new 2016

GALLEY AND GALLEY EQUIPMENT:

8 gal Calorifier

Twin s/s sinks

Top load fridge (new mechanics 2016)

Smev s/s oven with grill and two gas hobs

Jabsco 2.9 water pump (pressurised water throughout)

ENTERTAINMENT:

Fusion system with Bluetooth connectivity (2015)

2 internal and 2 waterproof deck speakers

ELECTRONICS/INSTRUMENTS/ AUTOPILOT:

Raymarine digital radar on Scanstrut gimballed mount (2015)

ST60 Raymarine deck instruments and transducers (2013)

2 x autohelm multi repeaters in nav station

Navman vhf 7100 dsc
Raymarine e7 cockpit mounted plotter with wifi connectivity for tablet slave display (2015)
Raymarine linear autopilot (new controller & ram seals 2015)
Raymarine seatalk bus connecting navigation, autopilot & hifi units (2015)
Masthead ais aerial installed 2015

BATTERIES/ELECTRICS/SHORE POWER:

240v shore power to internal sockets, calorifier and battery chargers
1000w 240/12v inverter (2015)
3 x 105 ah domestic batteries (2015)
1 x 90 ah dedicated engine battery (2015)
Bep 12v battery distribution panel (2015)

WIND GENERATOR/SOLAR PANELS:

Aerogen 4 wind generator with Aerogen charge controller & dump (2015)
80w flexible solar panels mounted on spray hood (2017)
MPPT solar panel charge controller (2017)
High output alternator & flat drivebelt pulley upgrade (2015)
Alternator 4 stage charge controller (2015)

BOW THRUSTER/FOLDING PROP:

Vetus 23 Bowthruster
Darglow Featherstream feathering propeller (2013)
2 spare fixed blade Volvo propellers (1 new)

GROUND TACKLE AND WINDLASS

Simpson Lawrence Seatiger 2 speed 555 windlass
CQR 45lb with 60m of calibrated chain (chain new 2015, anchor blasted & re-galvanised 2015)

WINCHES AND DECK EQUIPMENT:

Main Sheets - 2 X Lewmar 43 Twin Speed
Main Sheet - Lewmar 40 Twin Speed
Stay Sail Sheet - Antal 28 Twin Speed (2015)
Main Halyard - Lewmar 20 Twin Speed
Secondary Halyards - Lewmar 16 Twin Speed
Reefing Pennants - Lewmar 16 Twin Speed

SAILS:

Mainsail/staysail/yankee Crusader Sails triple stitched h/duty (new in 2005)
New mainsail cover, stackpack & lazyjacks (2015)
New staysail & yankee uv strips (2015)

RIGGING AND SPARS:

Kemp spars throughout including forward mounted spinnaker pole
Standing rigging - new including upgrade to twin backstays (2015)
Running rigging - new (2015)
Profurl staysail roller furling system (2016)
Furlex yankee roller furling system
Cobra 5r rod linked steering wheel

SAFETY EQUIPMENT:

Echomax radar reflector at spreaders and Visiball radar reflector at masthead
Life jackets (2)
Lifebuoy
New flare pack 2019
Fire extinguishers & fire blanket (2015)
Automatic fire extinguisher - engine compartment (2015)

General note on safety equipment: Any safety equipment such as life rafts, Epirbs, fire extinguishers and flares etc. are usually personal to the current owner(s) and if being left on-board as part of the sale of a used vessel may require routine servicing, replacement, or changing to meet a new owner's specific needs.

OTHER EQUIPMENT:

Hydrovane wind steering (new head, shaft and lower mounting 2015)
Rigid windscreen (factory extra)
Bathing platform (factory extra)
Mast safety bars with fender stowage (factory extra)
Twin gas lockers with universal regulator
Lewmar ocean hatches internal trim kits and mosquito screens (new 2015)
Windows & portlights refurbished & refitted with toughened glass (2015)
Black water tank to forward heads (2016)
Blakes seacocks & speed/depth transducers (new 2015)
2 manual bilge pumps (1 new 2015)
Electric bilge pump (2020)
Tricolour navigation light in addition to deck level navigation lights led (2015)
Internal lighting upgraded to led (2015)
Raw water pump new seals & shaft (2017)
Sprayhood (2017)
Binnacle/cockpit table canvas cover (2017)
Cockpit sun cover and side screen (2010)
Plastimo clock and barometer
Plastimo 240 dinghy

OWNERS COMMENTS:

Zulu Warrior has been set up for long term or blue water sailing but is just as at home as a fine coastal cruiser – the Hydrovane makes passage making a pleasure. Ready to sail south until the butter melts!

Lying: Portsmouth

Available to view by appointment

Please note all our listed yachts are privately owned and located at the owner's individual home port, marina or mooring and not one central location. Therefore due to the varying geographical locations of our yachts and the subsequent travel time and distances involved, please only make arrangements to view if actively considering purchase.

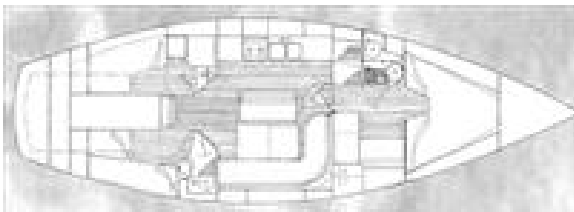
Office Hours Mon- Fri 09.30 – 17.30

Saturday by prior appointment

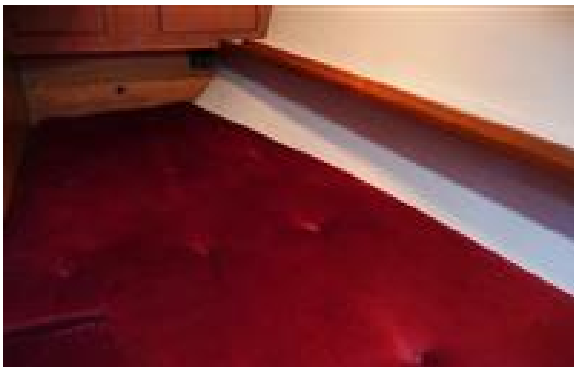
For more information or to arrange an appointment please contact John Rodriguez Yachts

Tel: +44 (0)7505 485 950

email: info@jryachts.com











John Rodriguez
—YACHTS—
WWW.JRYACHTS.COM

See our news page on our home website for updates on safe viewings. John Rodriguez Yachts provides professional ABYA yacht conveyancing & legal transfer of vessel title. The details of all vessels are offered in good faith but the correctness and accuracy of these particulars is not guaranteed and they do not constitute a part of any contract. We cannot guarantee nor warrant any vendor/third party supplied paperwork or the condition of the vessel. A buyer is strongly advised to instruct his agents, or marine surveyors, to investigate such details as the buyer desires validated. Although not mandatory in the UK we would always suggest appropriate training be undertaken before using a vessel. All vessels are offered subject to prior sale, price change, or withdrawal without notice. John Rodriguez Yachts is a trading name of John Rodriguez Yachts LLP Reg. No. OC416718 (England and Wales). Registered office C/O Connect Accounting, 15 Western Parade, Barnet, Herts, England, EN5 1AH. VAT No: