

# John Rodriguez

## — YACHTS —

WWW.JRYACHTS.COM

John Rodriguez Yachts, Hillcrest, Rockbourne Rd, Fordingbridge, Hants, SP6 1QF, UK

Tel: +44 (0)7505 485 950 | john@jryachts.com



## Nicholson 45

**£79,950 GBP tax paid/included**

**United Kingdom**

**Breathtaking lines**

|                    |                             |
|--------------------|-----------------------------|
| Manufacturer/Model | Nicholson 45                |
| Name               | Mertice                     |
| Designer           | Camper and Nicholson        |
| Year               | 2004                        |
| Category           | Sail                        |
| New or used        | Used                        |
| Status             | Available                   |
| Price              | £79,950 GBP                 |
| Tax/VAT status     | Paid / included             |
| Price comment      | Breathtaking lines          |
| Lying              | Southampton, United Kingdom |
| Reference          | N45MCC                      |

## Specifications

|                |           |
|----------------|-----------|
| Length overall | 13.33 m   |
| Beam           | 3.76 m    |
| Draft          | 2.00 m    |
| Displacement   | 12,000 kg |
| Hull           | GRP       |
| Keel           | Fin keel  |

## Description

Nicholson 45 for sale

Moulded in 1998, but not commissioned until 2004 and re-fitted in 2016. "Mertice" is believed to be the last of this modern classic design and is an absolutely fascinating vessel.

When first introduced the Nicholson 45 was highly regarded as the very latest in ocean racer design. Her graceful lines were the epitome of her time with almost flush decks, a retrousse stern, balanced overhangs and attractive tumblehome.

Mertice's hull is fitted with a Volvo 40hp saildrive and consists of a long fin fully encapsulated lead keel and full skeg hung rudder. Her cockpit is deep and well protected and she is a comfortable and stable ocean passagemaker. Her interior fit out is perhaps a little basic and simple, as she was built originally for a sail training trust, but her upholstery and range of recently fitted storage cupboards are of a high quality and she is extremely bright and spacious down below.

Topsides her lines are breathtaking.

In short, she is absolutely beautiful to look at.

Re-fitted twice in recent years by private owners, and being of comparably recent construction, she has the benefit of modern equipment as well as being blessed with gorgeous classic lines.

Due to an increase in family size, her current owner now wishes to buy a larger yacht, so much of her recent upgrades and preparations for blue water sailing have seen relatively light use.

More details are in the full specification section but her notable highlights include:

- Coppercoated (2018)
- Hydrovane Self Steering Gear (new 2016)
- New Sprayhood (2016)
- New Bimini (2016)
- New Standing rigging (2015)
- New guard wires (2015)
- New Granny bars (2015)
- Most running rigging renewed (2015)
- New Selden gennaker pole and downwind sail (2016)
- New Sailbag and lazy jacks (2016)
- Engine and Saildrive- out/overhaul including new diaphragm (2015)
- Seacocks replaced 2016
- Teak in cockpit area renewed 2016
- Webasto cabin heating (2010)
- Raymarine E80 chart plotter at chart table and repeater on pod at steering position (2010)
- Raymarine ST6002+ Autopilot with linear drive and remote control (2010)
- Raymarine ST60 instruments
- Radar with scanner on post on stern
- Feathering propeller (2009)
- Liferaft (2010)
- EPIRB (new 2016)
- Dinghy and outboard

Lying: Southampton

Available to view by appointment, please contact John Rodriguez Yachts

FULL SPECIFICATION:

CONSTRUCTION:

Nicholson 45 white GRP hull moulded in 1998

Built in 2002 at the Royal Clarence yard, Portsmouth  
Commissioned in 2004  
Designed by Camper & Nicholson  
Long Fin fully encapsulated lead Keel with full skeg hung rudder  
Deep aft cockpit with wheel steering

LOA 13.33m - 43' 6"

Beam: 3.76m - 12' 4"

Draft: 2.00m - 6' 6"

Displacement: 13 tonnes

#### ACCOMMODATION:

Sleeps up to 8 in fwd cabin, saloon and two single aft cabins  
Forecabin has double V berth with 2 occasional berths higher/outboard.  
The saloon has 2 settee berths with lee cloths  
2 aft cabins with single berth with lee cloths in each  
Spacious saloon with large opening/extending dining table  
Galley with worktop, sink and gimballed gas 3 burner cooker.  
Front opening fridge built into Saloon table  
Heads compartment with sink, marine toilet and shower  
Nav station with large chart table  
Large wetlocker  
Webasto cabin heating (2010)  
Ipod radio and speakers (2010)

#### NAVIGATION:

Raymarine E80 chart plotter at chart table and repeater on pod at steering position (2010)  
Raymarine ST6002+ Autopilot with linear drive and remote control (2010)  
Raymarine ST 60 instruments  
Radar with scanner on post on stern  
Ray 54E VHF (2010)  
Binnacle compass

#### ENGINE:

VOLVO 2040 - 40HP MARINE DIESEL  
Understood to be under 1,000hrs  
Engine and Saildrive - out/overhaul including new diaphragm (2015)  
Feathering propeller (2009)

#### ELECTRICS:

2 x house batteries 105 a/h (2011)  
1 x engine start battery (2011)  
Battery charger  
Shore power and 240v electrical circuit (6 x 240v outlets)  
New lights/wiring (2010)

#### SLOOP RIG WITH SPARS BY SELDEN:

2 Spreader aluminium rig with stainless steel wire rigging. (Re-rigged 2015)  
New guard wires (2015)  
Furlex furling genoa system  
Lazy jacks for mainsail  
Spinnaker pole  
Granny bars (new 2015)  
Most running rigging renewed (2015)

#### WINCHES :

(7 in total, all stripped and overhauled 2016)  
2 x Antal self tailing Primary Winches  
2 x Antal self tailing Secondary Winches  
2 x Antal self tailing Winches at mast  
1 further mainsail outhaul winch at mast

#### SAILS:

Mainsail with 3 x reefs  
Furling Genoa (new UV strip 2009)  
Selden gennaker pole and downwind sail (new 2016)  
Storm jib with separate sheet tracks  
Sailbag and lazy jacks (new 2016)

#### GROUND TACKLE:

CQR anchor and 70m chain  
Lofrans Royal Manual windlass (overhauled 2015)

#### TANKAGE:

3 x stainless steel Freshwater tanks in saloon total 550 litres  
1 x stainless steel Fuel tank  
Fuel tank capacity 95 litres  
Blackwater tank (new 2018)

#### WATER SYSTEM:

Pressurised hot and cold fresh water  
Hot water heated by engine and 230-volt immersion heater

#### GENERAL EQUIPMENT:

Webasto cabin heating (2010)  
Ipod radio and speakers (2010)  
Sprayhood (new 2016)  
Liferaft (2010)  
1 x horseshoe lifebuoy  
MOB marker buoy  
Dinghy with Suzuki outboard (overhauled 2016)  
Fire extinguishers (new 2016)  
Fenders  
Warps  
Bimini (new 2016)

#### Other:

Seacocks replaced 2016  
Freshwater tank valves replaced 2018  
Copper-coated 2018 with new anodes  
Rudder out for overhaul 2015  
Dimmable LED lighting in saloon (2016)  
Red/White lights over Nav Station and Galley (2016)  
Chain plates pulled and re-sealed (2015)  
Teak in cockpit area renewed 2016  
EPIRB (new 2016)

General note on safety equipment: Any safety equipment such as life rafts, Epirbs, fire extinguishers and flares etc. are usually personal to the current owner(s) and if being left on-board as part of the sale of a used vessel may require routine servicing, replacement, or changing to meet a new owner's specific needs.

#### OWNER'S COMMENTS:

I bought Mertice because of her solid construction, beautiful lines and reputation for looking after her crew in heavy weather. She is a real sailor's boat and trips from the UK to the Mediterranean and onwards to the Canaries have confirmed her as a supremely seaworthy vessel, not once leaving me concerned about her ability in heavy weather.

She is now well placed for the ARC and with some more radio kit is virtually ready to go. Equally suitable for cruising the Canaries of course.

I've only sailed her two-handed, with the Hydrovane helming. On a long passage, she has plenty of fresh water capacity and the economical engine run for a couple of hours a day provides plenty of hot water and keeps the fridge cold.

She has had many admirers along the way and I'll be sorry to see her go.

Lying: Southampton

Available to view by appointment

Please note all our listed yachts are privately owned and located at the owner's individual home port, marina or mooring and not one central location. Therefore due to the varying geographical locations of our yachts and the subsequent travel time and distances involved, please only make arrangements to view if actively considering purchase.

Office Hours Mon- Fri 09.30 – 17.30

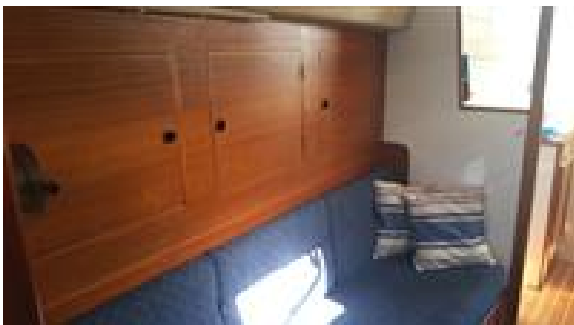
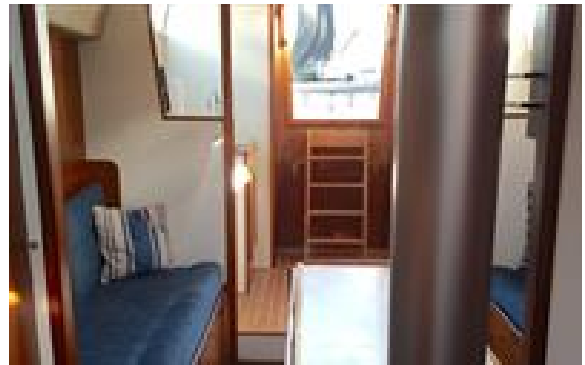
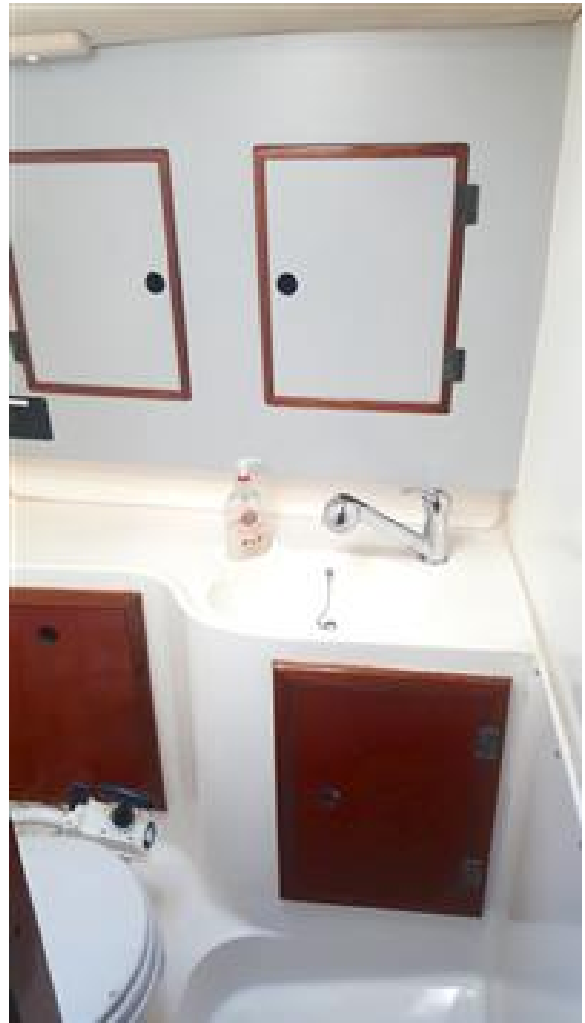
Saturday by prior appointment

For more information or to arrange an appointment please contact John Rodriguez Yachts

Tel: +44 (0)7505 485 950

email: [info@jryachts.com](mailto:info@jryachts.com)



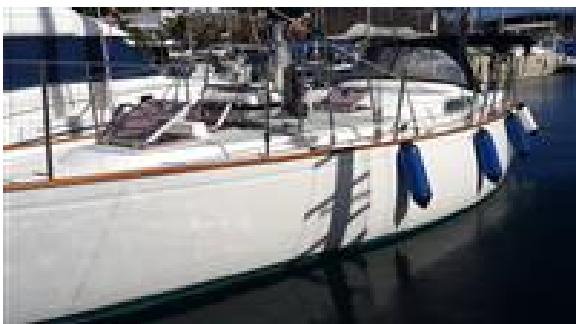














**ABYA**  
PROFESIONAL  
YACHTING ASSOCIATION  
FULL  
MEMBER

**John Rodriguez**  
— YACHTS —  
[WWW.JRYACHTS.COM](http://WWW.JRYACHTS.COM)

See our news page on our home website for updates on safe viewings. John Rodriguez Yachts provides professional ABYA yacht conveyancing & legal transfer of vessel title. The details of all vessels are offered in good faith but the correctness and accuracy of these particulars is not guaranteed and they do not constitute a part of any contract. We cannot guarantee nor warrant any vendor/third party supplied paperwork or the condition of the vessel. A buyer is strongly advised to instruct his agents, or marine surveyors, to investigate such details as the buyer desires validated. Although not mandatory in the UK we would always suggest appropriate training be undertaken before using a vessel. All vessels are offered subject to prior sale, price change, or withdrawal without notice. John Rodriguez Yachts is a trading name of John Rodriguez Yachts LLP Reg. No. OC416718 (England and Wales). Registered office C/O Connect Accounting, 15 Western Parade, Barnet, Herts, England, EN5 1AH. VAT No: