

John Rodriguez

— YACHTS —

WWW.JRYACHTS.COM

John Rodriguez Yachts, Hillcrest, Rockbourne Rd, Fordingbridge, Hants, SP6 1QF, UK

Tel: +44 (0)7505 485 950 | john@jryachts.com



Hallberg Rassy 342 - SOLD

£126,000 GBP tax paid/included

United Kingdom

Very smart example

Manufacturer/Model	Hallberg Rassy 342 - SOLD
Name	Nina
Year	2006
Category	Sail
New or used	Used
Status	Sold
Price	£126,000 GBP
Tax/VAT status	Paid / included
Price comment	Very smart example
Lying	Hamble, United Kingdom
Reference	HR342MLJ

Specifications

Length overall	10.31 m
Length waterline	9.07 m
Beam	3.43 m
Displacement	5,300 kg
Hull	GRP
Keel	Fin keel

Description

Hallberg Rassy 342 For Sale.

Sorry, unfortunately this yacht is now SOLD

Do you have a similar yacht for sale? If so we are always seeking quality cruising yachts for active buyers, especially in the Solent and surrounding areas. For more details please see the Sell Your Yacht Section

For our full list of other yachts for sale please see the Yachts for sale section

A very smart 2006/2007, lightly used and well-equipped example of this spacious Category A offshore cruising yacht.

Bright and airy with two double cabins, designed by Germán Frers and built to legendary Hallberg Rassy standards, Nina has a particularly impressive sail wardrobe and numerous extras and upgrades.

Just serviced, antifouled and re-launched for the 2019 season she presents extremely well.

Full details are in the specification section, but her highlights and upgrades include:

Webasto Heating With 4 Outlets
Volvo 3 Blade Folding Prop (New 2018)
Mainsail - Radial Hydronet (New 2014)
Jib - Radial Hydronet (New 2013)
Headsail Sock (New 2016)
Spare Main and Jib both by Elvstrom
Storm Jib by Quantum
Removable inner forestay
Heavy Jib for removable inner forestay by Kemp (New 2013)
Cruising Chute and Snuffer by Kemp (New 2012)
Raymarine ES97 Hybrid Touch Chart Plotter (New 2016)
Navionics Charts
Quantum Radar New 2016
Icom 500 TR AIS Transponder
Raymarine ST60+ Speed, Wind, Depth and Wind Close Hauled (Echosounder Transducer New 2019)
Raymarine ST6002 Wheel Pilot
Furuno 300 Navtex
Icom 423 DSC/VHF
Icom VHF Command Mic at Helm
Mastervolt 240v Battery Charger
2 – 32 Watt Flexible Panels (Detachable) with regulator
2011 Sprayhood plus older spare
Cockpit Tent
Plastimo 4 Man Liferaft (Certificate to 2020)
Yam 240 Dinghy By Zodiac (2006)
Yamaha F2.5 Outboard

LYING: Swanwick - Hamble

Available to view by appointment

Please note all our listed yachts are privately owned and located in the owner's home port or marina. Due to the varying geographical marina locations of our yachts and the subsequent travel time and distances involved, please only make travel arrangements to view if actively considering purchase.

Office Hours Mon- Fri 09.30 – 17.30
Saturday by prior appointment

For more information or to arrange an appointment please contact John Rodriguez Yachts

Tel: +44 (0)7505 485 950
email: info@jryachts.com

Specification

BOAT NAME: Nina

MAKE & MODEL: Hallberg Rassy 342

HULL MATERIAL: GRP

YEAR: 2006 - Launched 2007

LENGTH OVER ALL: 10.31m

LENGTH OVER WATERLINE: 9.07m

BEAM: 3.43m

DRAFT: 1.8m

KEEL TYPE: Fin

DISPLACEMENT: 5,300 Kg

FUEL TANKAGE: 165 litres

WATER TANKAGE: 265 litres

ENGINE MODEL: 3 Cylinder Volvo Penta D1-30 engine with sail drive, fresh water cooled

ENGINE HP: 29 HP

ENGINE HOURS: Unknown - Believed well below average

SAIL DRIVE OR SHAFT DRIVE: Sail Drive

DATE OF DIAPHRAGM REPLACEMENT: Original

DATE LAST ENGINE SERVICE: April 10th 2019

AGE OF STANDING RIGGING: Original

DATE LAST ANTIFOULED: April 2019

ACCOMMODATION

NUMBER OF SEPARATE SLEEPING
CABINS (EXCLUDING SALOON): 2

NUMBER OF BERTHS (EXCLUDING SALOON): 4

DOES SALOON CONVERT TO A DOUBLE OR SINGLE BERTHS: 2 large singles

TOTAL NUMBER OF ALL BERTHS: 6

NUMBER OF HEADS: 1

GALLEY AND GALLEY EQUIPMENT:

Eno 2 Burner Oven and Grill
Isotherm Top Loading Fridge
Hot and Cold Water
Additional Cold Water Foot Pump
Water Filtration – Nature Pure Tap

SAILS:

Mainsail Radial Hydronet 2014
Jib Radial Hydronet 2013

Both by OneSails
Headsail Sock 2016
Main cover
Spare Main and Jib both by Elvstrom
Storm Jib by Quantum
Heavy Jib for removable inner forestay by Kemp 2013
Cruising Chute and Snuffer by Kemp 2012

RIGGING AND SPARS:

Selden Twin Spreader 7/8 Mast and Boom
Adjustable Backstay
Telescopic Whisker Pole
Wichard Boom Brake

WINCHES AND DECK EQUIPMENT:

x2 44 Sheet Winches
x2 30 Halyard Winches
All by Lewmar and upgraded

GROUND TACKLE AND WINDLASS:

Delta 16KG Anchor
50 Mtr Chain
Lewmar Electric Windlass with foot controls and switch operation at helm
Danforth Kedge

PROP:

Volvo 3 Blade Folding Prop New 2018

BATTERIES/ELECTRICS/SHORE POWER:

Shore Power Cable
12v Engine Start Battery
2 - 6v House Batteries (12v 250 a/h)
Mastervolt 240v Battery Charger

SOLAR PANELS:

2 – 32 Watt Flexible Panels (Detachable) with regulator

ELECTRONICS/INSTRUMENTS/ VHF/AUTOPILOT:

Raymarine ES97 Hybrid Touch Chart Plotter New 2016
Navionics Charts
Quantum Radar New 2016
Icom 500 TR AIS Transponder
Raymarine ST60+ Speed, Wind, Depth and Wind Close Hauled (Echosounder Transducer 2019)
Raymarine ST6002 Wheel Pilot
Furuno 300 Navtex
Icom 423 DSC/VHF
Icom VHF Command Mic at Helm

ENTERTAINMENT:

Pioneer CD/Radio

SAFETY EQUIPMENT:

Jon MOB Recovery
Horse Shoe With Light
Plastimo 4 Man Liferaft Certificate to 2020
X3 Bilge Pumps

General note on safety equipment: Any safety equipment such as life rafts, Epirbs, fire extinguishers and flares etc. are usually personal to the current owner(s) and if being left on-board as part of the sale of a used vessel may require routine servicing, replacement, or changing to meet a new owner's specific needs.

DINGHY AND OUTBOARD:

Yam 240 By Zodiac (2006)
Yamaha F2.5 Outboard

OTHER EQUIPMENT:

Webasto Air Top Heating With 4 Outlets
7 Dimmable LED Cabin Reading Lights
White/Red Dimmable LED Chart Light
Ocean Air Blinds to Portlights
Clock
Barometer
Additional shelves in aft hanging locker
Additional shelves behind saloon seat backrests
Additional drawer pack under chart table
2011 Sprayhood plus older spare
Cockpit Tent
X2 Calor Gas Bottles

OWNERS COMMENTS:

We have had some great sailing with this yacht, but unfortunately, age says it's time for a motorboat!

LYING: Swanwick Hamble

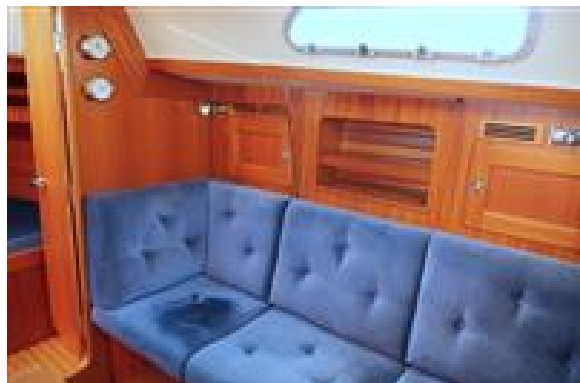
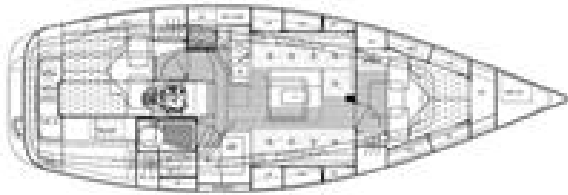
Available to view by appointment

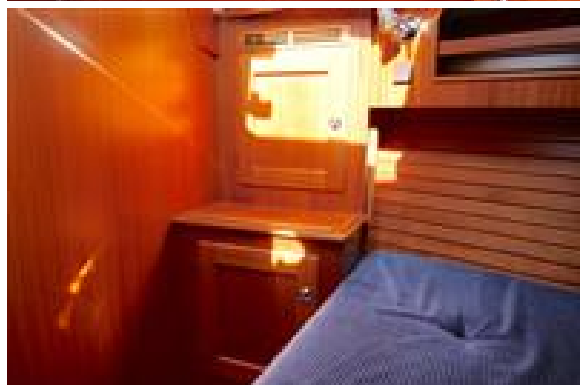
Please note all our listed yachts are privately owned and located in the owner's home port or marina. Due to the varying geographical marina locations of our yachts and the subsequent travel time and distances involved, please only make travel arrangements to view if actively considering purchase.

Office Hours Mon- Fri 09.30 – 17.30
Saturday by prior appointment

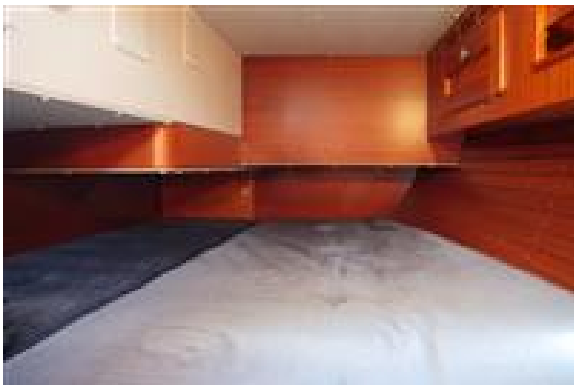
For more information or to arrange an appointment please contact John Rodriguez Yachts

Tel: +44 (0)7505 485 950
email: info@jryachts.com



















See our news page on our home website for updates on safe viewings. John Rodriguez Yachts provides professional ABYA yacht conveyancing & legal transfer of vessel title. The details of all vessels are offered in good faith but the correctness and accuracy of these particulars is not guaranteed and they do not constitute a part of any contract. We cannot guarantee nor warrant any vendor/third party supplied paperwork or the condition of the vessel. A buyer is strongly advised to instruct his agents, or marine surveyors, to investigate such details as the buyer desires validated. Although not mandatory in the UK we would always suggest appropriate training be undertaken before using a vessel. All vessels are offered subject to prior sale, price change, or withdrawal without notice. John Rodriguez Yachts is a trading name of John Rodriguez Yachts LLP Reg. No. OC416718 (England and Wales). Registered office C/O Connect Accounting, 15 Western Parade, Barnet, Herts, England, EN5 1AH. VAT No: