

John Rodriguez  
— YACHTS —  
WWW.JRYACHTS.COM

John Rodriguez Yachts, Hillcrest, Rockbourne Rd, Fordingbridge, Hants, SP6 1QF, UK

Tel: +44 (0)7505 485 950 | john@jryachts.com



## Oyster 53 - UNDER OFFER

**£485,000 GBP tax paid/included**

**United Kingdom**

**Highly desirable Ocean Cruiser**

Manufacturer/Model	Oyster 53 - UNDER OFFER
Name	Distraction
Designer	Rob Humphreys
Year	2007
Category	Sail
New or used	Used
Status	Available
Price	£485,000 GBP
Tax/VAT status	Paid / included
Price comment	Highly desirable Ocean Cruiser
Lying	Hamble, United Kingdom
Reference	OY53DST

## Specifications

Length overall	16.40 m
Length waterline	13.90 m
Beam	4.66 m
Draft	2.23 m
Displacement	21,500 kg
Hull	GRP
Keel	Bulb keel

## Description

Oyster 53 For Sale

Sorry, unfortunately this yacht is now UNDER OFFER

Do you have a similar yacht for sale? If so we are always seeking quality cruising yachts for active buyers, especially in the Solent and surrounding areas. For more details please see the Sell Your Yacht Section

For our full list of other yachts for sale please see the Yachts for sale section

2007 model and one of the few G5 versions.

Distraction is a striking example of the Oyster 53 and presents extremely well, with her smart blue hull and American white oak interior.

In just her second ownership she appears to have been particularly well cared for by her knowledgeable owner and is set up for long distance cruising in comfort and safety.

A particularly attractive yacht and easy to handle, she should rise rapidly to the top of any short list.

Her full details are in the specification section, but her notable highlights include:

- 4 Cabins
- Electric in-mast furling
- Re-rigged 2015
- Electric Primary Winches
- Bow Thruster - new replacement 2018
- Air Conditioning
- Watermaker
- Generator
- Electric Davits
- Avon 3.1m RIB
- Yamaha 9.9hp two stroke outboard motor

Lying: Hamble UK

Available to view by appointment, please contact John Rodriguez Yachts

### FULL SPECIFICATION

Boat Name: Distraction

Make & Model: Oyster 53

Year: 2007

Hull Material: GRP

Keel Type: High performance bulb (HPB) external lead keel

Length Overall: 16.40m

Length Over Waterline: 13.90m

Beam: 4.66m

Draft: 2.23m

Displacement: 21,500kg

Fuel Tankage: 800 ltr

Water Tankage: 700 ltr

Engine Make and Model: Yanmar 4JH3-HTE98 4-cylinder diesel

Engine HP: 100 hp

Engine Hours: Circa 2200

Date Last Engine Service: Sept 2019

Sail Drive or Shaft Drive: Shaft

Age of Standing Rigging: Replaced April 2015

Date Last Antifouled: July 2020

Accommodation

Number of Sleeping Cabins: 4

Number of Double Berths: 2

Number of Single Berths: 3

Additional Single Berths in Saloon: 1

Number of Heads: 2 - VacuFlush 500 Electric toilet and PAR Quiet flush fresh water electric toilet

Galley Equipment:

Twin Stainless Steel Sinks, Gimballed Force 10 FT63451 cooker in stainless steel with 4 burners, grill and oven. Panasonic microwave combination oven/grill. Brushed stainless steel rods in Avonite top for resting hot pans. Front opening refrigerator and top opening freezer. Rubbish bin fitted inside locker door. Ample stowage for crockery etc. Bosch washer/dryer

Additional Accommodation Summary Notes:

Seven berths in four cabins excluding the saloon. Interior finished in American white oak with Oyster "millennium" styling with Alcantara upholstery in saloon and owner's stateroom.

Cabins consist of; Owners stateroom aft with centreline double berth en-suite heads and shower, workshop/single berth cabin, forward double cabin with centreline double berth and en-suite heads and shower and twin cabin to starboard with upper and lower single berths.

The saloon has an oval table with settee area to starboard and additional two-seater settee to port. The galley is well appointed and fitted with front opening refrigerator and top opening freezer. There is also reverse cycle air conditioning to Saloon, fwd cabin, aft cabin and bunk cabin.

SAILS:

By Dolphin Sails - Original  
Furling Mainsail-tri-radial design in DCP Pentex/polyester laminate.  
Furling Genoa-tri-radial design in DCP Pentax/polyester laminate.  
Cruising chute-1.5oz rocked radial design with squeezer  
Storm jib in 9.0oz High Visibility Orange Dacron

REEFING SET UP/RIGGING AND SPARS:

Sloop rig with part retrofit for cutter rig (chainplates for runners and stay, furling line control gear).  
Selden mast, white painted, with electric in-mast furling. Double spreader rig.  
Selden solid rod kicker/vang. Harken B503 backstay tensioner. Removable inner forestay. Standing rigging in continuous stainless steel 1 x 19 wire.  
Headsail Furling: Harken Unit 2 headsail furling gear.

WINCHES AND DECK EQUIPMENT:

By Lewmar

2 x 65 CEST electric two speed primary winches

2 x 48 CST secondary winches

1 x 48 CEST electric mainsheet winch

2 x 48 CST electric two speed, main and genoa halyard winches fitted on mast.

2 x 16 CST single speed, mainsheet traveller control line winches.

#### GROUND TACKLE AND WINDLASS:

CQR Anchor 100m chain

Electric Windlass

#### BOW THRUSTER:

Sleipner SP155 tunnel bowthruster including eyebrow, with plastic-coated wire cage for protection. New 2018.

#### BATTERIES/INVERTER:

60A 12v alternator to charge engine start batteries.

Mastervolt 150A alternator to charge domestic batteries.

Inverter: Mastervolt 24/2500 220v

#### GENERATOR:

Westerbeke BTD 7.5kw 220v Generator

#### INSTRUMENTS/ELECTRONICS/VHF/AUTOPILOT:

Compass: S.I.R.S. Major 150mm diameter flush mounted steering compass.

Sailing instruments: Raymarine ST60+ system with boat speed, wind speed/direction and depth displayed at the forward end of the cockpit.

Radar/Chart Plotter/ GPS: Raymarine E120 radar/plotter/GPS interfaced system at chart table, with 4kw radome including MARPA. Raymarine E80 radar/plotter repeater in navpod by companionway. Standalone Raymarine GPS.

Autopilot: Raymarine autopilot with twin type 2 long 24v linear drive units, Type S3G 24v course computer and ST6002 control head fitted at pedestal.

Windex: Windex at masthead.

VHF Radio: Raymarine Ray 240E Class D-DSC VHF radio-telephone with masthead antennae. Cobra Marine hand-held VHF with charger.

Satellite Phone: Fixed Iridium with USB docking station in navigation area for laptop (No sim card installed)

#### ENTERTAINMENT/TV/RADIO:

Alpine multi-region DVD/tuner with ipod interface, Alpine sound processor and subwoofer, and Anthony Gallo speakers. Sharp 20" tv on bulkhead with hinged bracket and additional TV in aft cabin. Currently not functioning as TV's but as DVD players.

Alpine multi-region DVD/tuner with ipod interface, 2 x 16cm speakers.

Pair of waterproof speakers

#### WATERMAKER:

Seafresh 206A 220v AC watermaker (approx. 96 ltrs/hour).

With auto freshwater back-flush.

#### SAFETY EQUIPMENT:

Liferaft: Ocean Safety, Charter-8 Man- Valise with ISO first aid kit.

EPIRB: Global G-Fix

Radar: Echomax radar reflector on mast.

Bilge Pumps: Jabsco Utility 3000 Puppy electric bilge pump with par hydro air switch. Henderson Mk V manual bilge pump.

Deck Safety: Hourseshoe lifebuoy with light, MOB button on raymarine E120, emergency tiller.

Fire extinguishers: Various including automatic fire extinguisher in engine bay, fire blanket.

General note on safety equipment: Any safety equipment such as life rafts, Epirbs, fire extinguishers and flares etc. are

usually personal to the current owner(s) and if being left on-board as part of the sale of a used vessel may require routine servicing, replacement, or changing to meet a new owner's specific needs

**DINGHY AND OUTBOARD:**

Avon 3.1m RIB  
Yamaha 9.9hp two stroke outboard motor.

**OTHER EQUIPMENT:**

Bimini  
Sprayhood  
Electric Davits

Lying: Hamble

Available to view by appointment

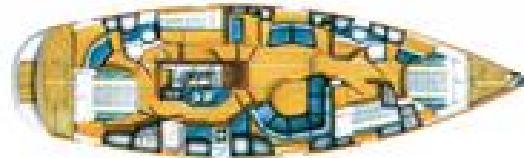
Please note all our listed yachts are privately owned and located at the owner's individual home port, marina or mooring and not one central location. Therefore due to the varying geographical locations of our yachts and the subsequent travel time and distances involved, please only make arrangements to view if actively considering purchase.

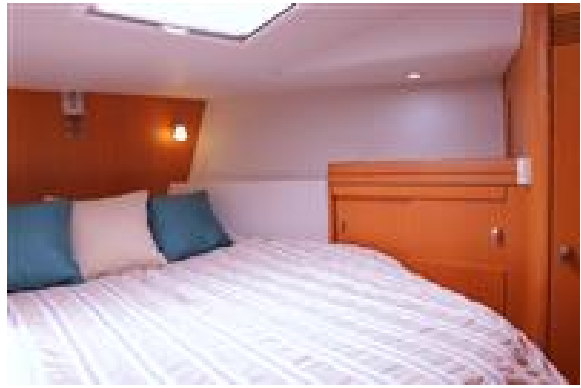
Office Hours Mon- Fri 09.30 – 17.30

Saturday by prior appointment

For more information or to arrange an appointment please contact John Rodriguez Yachts

Tel: +44 (0)7505 485 950  
email: [info@jryachts.com](mailto:info@jryachts.com)

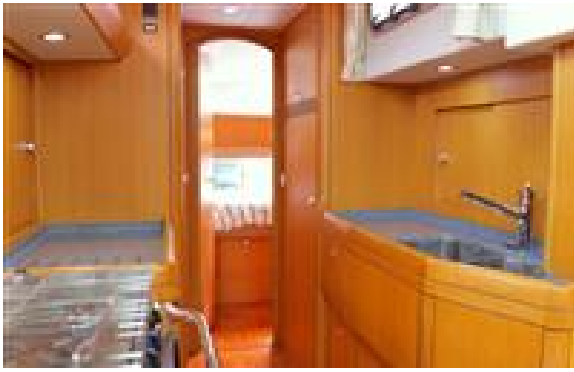




















See our news page on our home website for updates on safe viewings. John Rodriguez Yachts provides professional ABYA yacht conveyancing & legal transfer of vessel title. The details of all vessels are offered in good faith but the correctness and accuracy of these particulars is not guaranteed and they do not constitute a part of any contract. We cannot guarantee nor warrant any vendor/third party supplied paperwork or the condition of the vessel. A buyer is strongly advised to instruct his agents, or marine surveyors, to investigate such details as the buyer desires validated. Although not mandatory in the UK we would always suggest appropriate training be undertaken before using a vessel. All vessels are offered subject to prior sale, price change, or withdrawal without notice. John Rodriguez Yachts is a trading name of John Rodriguez Yachts LLP Reg. No. OC416718 (England and Wales). Registered office C/O Connect Accounting, 15 Western Parade, Barnet, Herts, England, EN5 1AH. VAT No: